

UNITED STATES DEPARTMENT OF
COMMERCE
NEWS

WASHINGTON, D.C. 20230

ECONOMICS
AND
STATISTICS
ADMINISTRATION

Bureau of
Economic Analysis

FOR WIRE TRANSMISSION: 9:00 A.M. EDT, TUESDAY, APRIL 27, 1999

Duke Tran: (202) 606-5344 (Analysis)
Kathy Albetski: 606-5360 (Estimates)

BEA 99-10

**1998 STATE PER CAPITA PERSONAL INCOME
and STATE PERSONAL INCOME (Preliminary)**

North Dakota and Colorado led the nation in per capita personal income growth in 1998, according to preliminary estimates released by the Commerce Department's Bureau of Economic Analysis.

For the nation, per capita income grew 4.4 percent in 1998 to \$26,412, up from \$25,288 in 1997 (see table 1). The 4.4-percent growth rate in per capita income was more than five times the 0.8-percent increase in prices (as measured by the price index for personal consumption expenditures). All 50 states and the District of Columbia had increases in per capita income that exceeded the increase in prices.

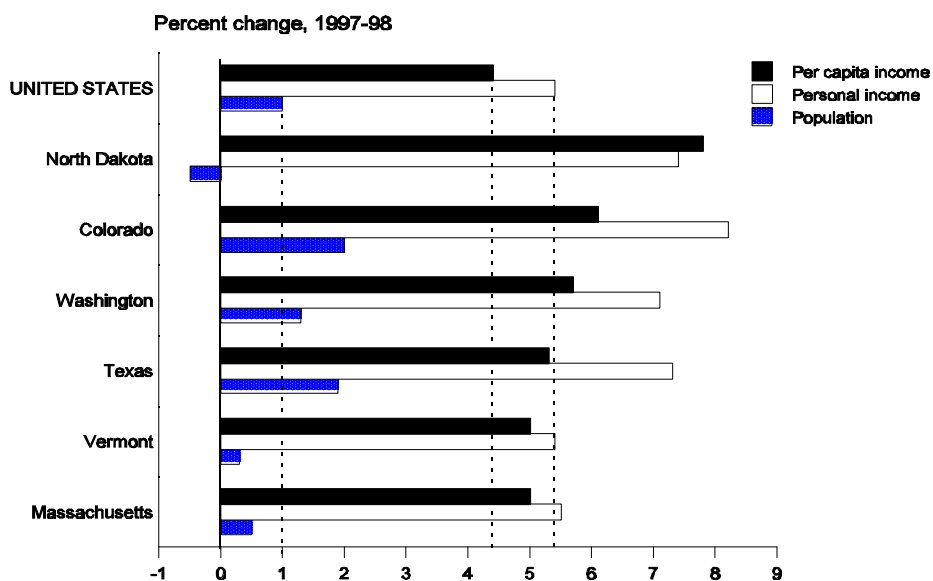
State per capita income growth in 1998

Fastest growing states.--- In 1998, the six states with the fastest growth in per capita income were North Dakota (7.8 percent), Colorado (6.1 percent), Washington (5.7 percent), Texas (5.3 percent), Vermont (5.0 percent), and Massachusetts (5.0 percent).

In all six fastest growing states, growth rates in personal income exceeded or equaled the U.S. average of 5.4 percent, and in Colorado, Washington, and Texas, growth rates in population were above the U.S. average of 1.0 percent (see chart on page 2).

- more -

Fastest growing states



In all six fastest growing states, net earnings was the major contributor to personal income growth (see table 5, contribution to percent change in personal income, and "Definitions" on page 6).

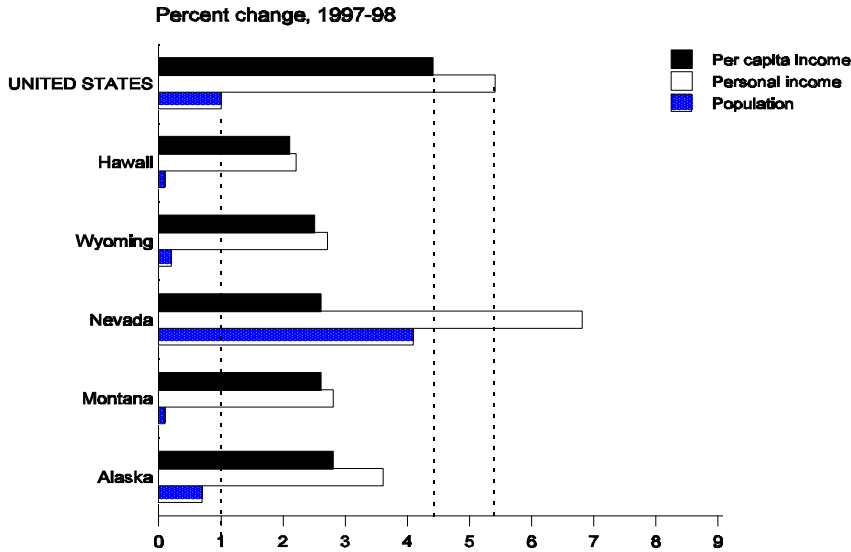
By industry, in all of the fastest growing states except North Dakota, earnings in services was the largest contributor to earnings growth. In North Dakota, earnings in farms was the largest contributor, reflecting increases in subsidy payments, authorized by the Federal 1998 Omnibus Budget Resolution, and a recovery of crop production in the state.

In addition, in Colorado, earnings in construction and in finance, insurance, and real estate contributed substantially to earnings growth; in Washington and Texas, earnings in manufacturing contributed; in Massachusetts, earnings in finance, insurance, and real estate contributed; and in Vermont, earnings in construction and manufacturing contributed.

Slowest growing states.—In 1998, the five states with the slowest growth in per capita income were Hawaii (2.1 percent), Wyoming (2.5 percent), Nevada (2.6 percent), Montana (2.6 percent), and Alaska (2.8 percent).

In all of the slowest growing states except Nevada, growth in personal income was less than the U.S. average, and population growth was less than the U.S. average. In Nevada, the slow growth in per capita income reflected rapid growth in population that largely offset above-average growth in personal income.

Slowest growing states



In all of the slowest growing states except Nevada, personal income growth was held back by slow growth in net earnings.

By industry, in Hawaii, a decline in earnings in construction contributed to slow earnings growth; in Wyoming, a decline in earnings in transportation and public utilities contributed to slow growth in earnings; in Montana, declines in earnings in farms and in transportation and public utilities contributed to slow growth in earnings; and in Alaska, declines in earnings in manufacturing and government contributed to the slow growth in earnings.

Ranking of state per capita income

In 1998, per capita income ranged from \$37,598 in Connecticut to \$18,958 in Mississippi (see map on page 4).

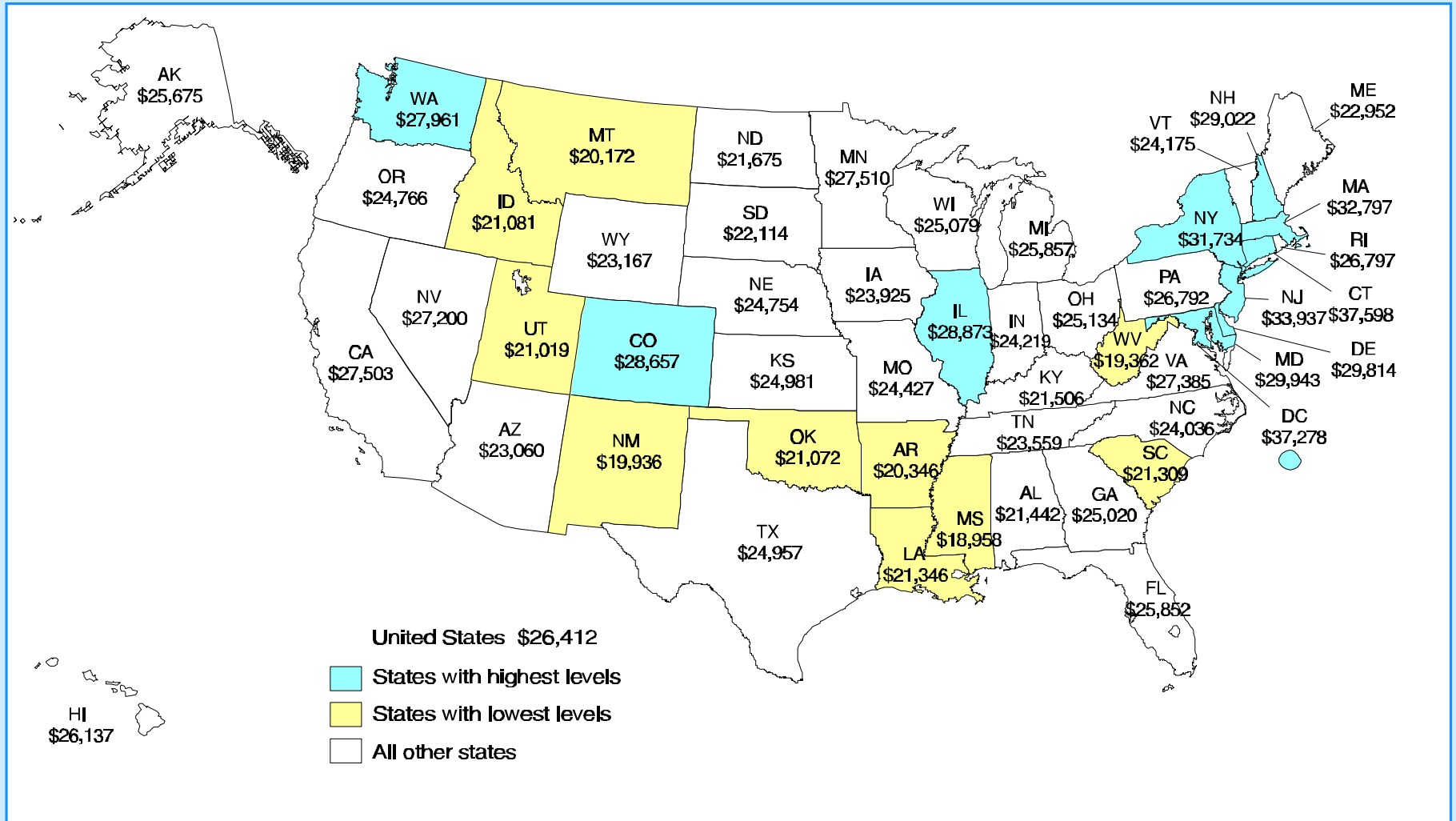
The ranking of states by per capita income changed little between 1997 and 1998 (see table 4). Only North Dakota increased more than two positions in rank, and only Nevada declined more than two positions in rank.

The 10 states with the highest per capita incomes in 1998 were:

	Dollars		Rank	
	1997	1998	1997	1998
Connecticut	35,863	37,598	1	1
New Jersey	32,356	33,937	2	2
Massachusetts	31,239	32,797	3	3
New York	30,250	31,734	4	4
Maryland	28,674	29,943	5	5
Delaware	28,493	29,814	6	6
New Hampshire	27,766	29,022	7	7
Illinois	27,688	28,873	8	8
Colorado	27,015	28,657	9	9
Washington	26,451	27,961	11	10

Except for Illinois, the states with the highest per capita incomes in 1998 had growth rates that exceeded or equaled the U.S. average of 4.4 percent.

Per Capita Personal Income, 1998



U.S. Department of Commerce, Bureau of Economic Analysis

The 10 states with the lowest per capita incomes in 1998 were:

	-----Dollars-----		-----Rank-----	
	1997	1998	1997	1998
Louisiana	20,458	21,346	41	41
South Carolina	20,508	21,309	40	42
Idaho	20,392	21,081	42	43
Oklahoma	20,305	21,072	43	44
Utah	20,185	21,019	44	45
Arkansas	19,595	20,346	47	46
Montana	19,660	20,172	46	47
New Mexico	19,298	19,936	48	48
West Virginia	18,724	19,362	49	49
Mississippi	18,098	18,958	50	50

Except for Mississippi, the states with the lowest per capita incomes in 1998 had growth rates that were below the U.S. average of 4.4 percent.

State personal income for 1998 and for the fourth quarter of 1998

The preliminary 1998 estimates of state personal income released today are derived from the average of quarterly state personal income estimates for 1998. The estimates for the fourth quarter of 1998 are available for the first time today and are presented in table 8.

In 1998, U.S. personal income increased \$368.4 billion, or 5.4 percent, compared with 5.7 percent in 1997 (see tables 2 and 5). The Southeast and Far West regions had the largest dollar increases in 1998. Although both of these regions experienced slowdowns in growth rates, they still accounted for 22.2 percent and 19 percent of the growth in U.S. personal income, respectively. The increases in personal income in the Southeast were largely accounted for by Florida, Georgia, Virginia, and North Carolina, and in the Far West by California.

Among states, California accounted for the largest share of the increase in U.S. personal income in 1998 (14 percent). California has accounted for the largest share of the increase in U.S. personal income since 1994. Texas accounted for a 9.1-percent share of the increase in U.S. personal income in 1998, down from a 9.5-percent share in 1993. Texas has accounted for the second largest share of the increase in U.S. personal income since 1993.

In the fourth quarter of 1998, the four states with the fastest growth in personal income were North Dakota, South Dakota, Nebraska, and Iowa. In these four states, the fast growth in personal income reflected large increases in farm subsidy payments, authorized by the Federal 1998 Omnibus Budget Resolution.

Definitions

Personal income is the income received by all persons from participation in production, from government and business transfer payments, and from government interest. Personal income is the sum of net earnings by place of residence, rental income of persons, personal dividend income, personal interest income, and transfer payments. Net earnings is earnings by place of work – the sum of wage and salary disbursements (payrolls), other labor income, and proprietors' income -- less personal contributions for social insurance, plus an adjustment to convert earnings by place of work to a place-of-residence basis. Personal income is measured before the deduction of personal income taxes and other personal taxes and is reported in current dollars (no adjustment is made for price changes).

The estimate of personal income in the United States is derived as the sum of the state estimates; it differs from the estimate of personal income in the national income and product accounts (NIPA's) because of differences in coverage, in the methodologies used to prepare the estimates, and in the timing of the availability of source data.

Per capita personal income is the annual total personal income of residents divided by resident population as of July 1.

Private goods-producing industries are defined to consist of farms; agricultural services, forestry, and fishing; mining; construction; and manufacturing. Private services-producing industries are defined to consist of transportation and public utilities; wholesale trade; retail trade; finance, insurance, and real estate; and services.

* * *

BEA's major national, regional, international, and industry estimates; the Survey of Current Business; and BEA news releases are available on BEA's web site:

<http://www.bea.doc.gov>

STAT-USA maintains an electronic bulletin board (EBB) and an Internet site, which contain BEA estimates, BEA news releases, and the Survey of Current Business. To subscribe to STAT-USA's World Wide Web system, go to: *<http://www.stat-usa.gov>*. Subscriptions for single-user unlimited access to STAT-USA's Internet information are \$50.00 for 3 months or \$150.00 for 1 year. For further information, call (202) 482-1986.

Summary BEA estimates are available on recorded messages at the time of public release at the following telephone numbers:

(202) 606-5306 Gross domestic product
606-5303 Personal income and outlays
606-5362 Summary of international transactions

Most of BEA's estimates and analyses appear in the Survey of Current Business, BEA's monthly journal. The printed Survey of Current Business is available from the Superintendent of Documents, U.S. Government Printing Office, Washington D.C. 20402. First class mail: Annual subscription \$88.00 domestic. Second class mail: Annual subscription \$39.00 domestic, \$48.75 foreign; single issue \$14.00 domestic, \$17.50 foreign.

* * *

Next state personal income release -- July 27, at 9:00 AM EDT for
State Personal Income: First Quarter 1999

Table 1.—Per Capita Personal Income, by State and Region, 1994-98

[Dollars]

	1994 ^r	1995 ^r	1996 ^r	1997 ^r	1998 ^p	Percent change			
						1994-95	1995-96	1996-97	1997-98
United States	22,056	23,059	24,164	25,288	26,412	4.5	4.8	4.7	4.4
New England									
Connecticut	30,310	32,073	33,979	35,863	37,598	5.8	5.9	5.5	4.8
Maine	19,190	19,995	20,948	21,937	22,952	4.2	4.8	4.7	4.6
Massachusetts	26,433	28,097	29,591	31,239	32,797	6.3	5.3	5.6	5.0
New Hampshire	24,119	25,313	26,418	27,766	29,022	5.0	4.4	5.1	4.5
Rhode Island	22,315	23,520	24,356	25,667	26,797	5.4	3.6	5.4	4.4
Vermont	20,196	21,246	22,179	23,017	24,175	5.2	4.4	3.8	5.0
Mideast									
Delaware	24,465	25,603	27,125	28,493	29,814	4.7	5.9	5.0	4.6
District of Columbia	31,212	32,398	34,213	35,704	37,278	3.8	5.6	4.4	4.4
Maryland	25,329	26,141	27,298	28,674	29,943	3.2	4.4	5.0	4.4
New Jersey	28,333	29,568	30,892	32,356	33,937	4.4	4.5	4.7	4.9
New York	26,242	27,587	29,015	30,250	31,734	5.1	5.2	4.3	4.9
Pennsylvania	22,343	23,268	24,533	25,670	26,792	4.1	5.4	4.6	4.4
Great Lakes									
Illinois	23,956	25,135	26,393	27,688	28,873	4.9	5.0	4.9	4.3
Indiana	20,734	21,427	22,234	23,202	24,219	3.3	3.8	4.4	4.4
Michigan	22,338	23,407	23,996	24,956	25,857	4.8	2.5	4.0	3.6
Ohio	21,237	22,217	23,054	24,163	25,134	4.6	3.8	4.8	4.0
Wisconsin	21,012	21,960	22,987	24,048	25,079	4.5	4.7	4.6	4.3
Plains									
Iowa	19,964	20,412	22,032	23,120	23,925	2.2	7.9	4.9	3.5
Kansas	20,638	21,481	22,707	23,972	24,981	4.1	5.7	5.6	4.2
Minnesota	22,802	23,736	25,235	26,243	27,510	4.1	6.3	4.0	4.8
Missouri	20,576	21,540	22,586	23,629	24,427	4.7	4.9	4.6	3.4
Nebraska	20,365	21,029	22,847	23,618	24,754	3.3	8.6	3.4	4.8
North Dakota	18,156	18,149	20,197	20,103	21,675	0	11.3	-5	7.8
South Dakota	18,568	18,724	20,450	21,076	22,114	.8	9.2	3.1	4.9
Southeast									
Alabama	18,163	19,041	19,838	20,672	21,442	4.8	4.2	4.2	3.7
Arkansas	17,090	17,934	18,808	19,595	20,346	4.9	4.9	4.2	3.8
Florida	21,761	22,676	23,834	24,799	25,852	4.2	5.1	4.0	4.2
Georgia	20,632	21,696	22,900	23,882	25,020	5.2	5.5	4.3	4.8
Kentucky	17,872	18,601	19,475	20,570	21,506	4.1	4.7	5.6	4.6
Louisiana	18,086	18,826	19,609	20,458	21,346	4.1	4.2	4.3	4.3
Mississippi	15,886	16,574	17,398	18,098	18,958	4.3	5.0	4.0	4.8
North Carolina	19,920	20,996	22,053	23,168	24,036	5.4	5.0	5.1	3.7
South Carolina	17,914	18,789	19,651	20,508	21,309	4.9	4.6	4.4	3.9
Tennessee	20,088	21,109	21,800	22,699	23,559	5.1	3.3	4.1	3.8
Virginia	23,031	23,943	24,950	26,109	27,385	4.0	4.2	4.6	4.9
West Virginia	16,948	17,441	18,116	18,724	19,362	2.9	3.9	3.4	3.4
Southwest									
Arizona	19,127	20,078	21,071	21,998	23,060	5.0	4.9	4.4	4.8
New Mexico	17,150	18,029	18,634	19,298	19,936	5.1	3.4	3.6	3.3
Oklahoma	17,984	18,544	19,342	20,305	21,072	3.1	4.3	5.0	3.8
Texas	20,312	21,320	22,345	23,707	24,957	5.0	4.8	6.1	5.3
Rocky Mountain									
Colorado	23,019	24,304	25,627	27,015	28,657	5.6	5.4	5.4	6.1
Idaho	18,186	18,961	19,741	20,392	21,081	4.3	4.1	3.3	3.4
Montana	17,590	18,286	18,872	19,660	20,172	4.0	3.2	4.2	2.6
Utah	17,004	18,054	19,214	20,185	21,019	6.2	6.4	5.1	4.1
Wyoming	19,865	20,685	21,524	22,596	23,167	4.1	4.1	5.0	2.5
Far West									
Alaska	23,417	23,971	24,310	24,969	25,675	2.4	1.4	2.7	2.8
California	22,953	23,983	25,142	26,314	27,503	4.5	4.8	4.7	4.5
Hawaii	24,090	24,848	25,086	25,598	26,137	3.1	1.0	2.0	2.1
Nevada	23,391	24,541	25,877	26,514	27,200	4.9	5.4	2.5	2.6
Oregon	20,508	21,618	22,894	23,920	24,766	5.4	5.9	4.5	3.5
Washington	22,687	23,677	24,958	26,451	27,961	4.4	5.4	6.0	5.7
BEA regions									
New England	25,934	27,439	28,872	30,427	31,901	5.8	5.2	5.4	4.8
Mideast	25,489	26,636	27,978	29,252	30,634	4.5	5.0	4.6	4.7
Great Lakes	22,128	23,140	24,055	25,158	26,185	4.6	4.0	4.6	4.1
Plains	20,863	21,631	23,039	24,034	25,051	3.7	6.5	4.3	4.2
Southeast	19,893	20,804	21,787	22,751	23,725	4.6	4.7	4.4	4.3
Southwest	19,666	20,605	21,577	22,787	23,921	4.8	4.7	5.6	5.0
Rocky Mountain	20,128	21,194	22,304	23,414	24,563	5.3	5.2	5.0	4.9
Far West	22,797	23,816	24,969	26,127	27,290	4.5	4.8	4.6	4.5

^r Revised.
^p Preliminary

Source: Bureau of Economic Analysis, U.S. Department of Commerce.

Table 2.—Personal Income, by State and Region, 1994-98

[Millions of dollars]

	1994	1995 ^r	1996 ^r	1997 ^r	1998 ^p	Percent change			
						1994-95	1995-96	1996-97	1997-98
United States	5,741,050	6,059,091	6,408,103	6,770,650	7,139,057	5.5	5.8	5.7	5.4
New England									
Connecticut	98,966	104,616	110,904	117,173	123,099	5.7	6.0	5.7	5.1
Maine	23,698	24,658	25,934	27,243	28,559	4.1	5.2	5.0	4.8
Massachusetts	159,317	170,211	179,998	191,008	201,605	6.8	5.7	6.1	5.5
New Hampshire	27,337	29,014	30,633	32,546	34,392	6.1	5.6	6.2	5.7
Rhode Island	22,170	23,269	24,067	25,340	26,488	5.0	3.4	5.3	4.5
Vermont	11,688	12,375	13,004	13,549	14,285	5.9	5.1	4.2	5.4
Mideast									
Delaware	17,344	18,401	19,723	20,946	22,170	6.1	7.2	6.2	5.8
District of Columbia	17,659	17,899	18,463	18,919	19,501	1.4	3.2	2.5	3.1
Maryland	126,277	131,318	138,068	146,090	153,753	4.0	5.1	5.8	5.2
New Jersey	224,290	235,425	247,381	260,736	275,398	5.0	5.1	5.4	5.6
New York	476,331	500,563	526,390	548,927	576,779	5.1	5.2	4.3	5.1
Pennsylvania	269,002	280,147	295,230	308,325	321,540	4.1	5.4	4.4	4.3
Great Lakes									
Illinois	282,546	298,246	314,960	331,966	347,784	5.6	5.6	5.4	4.8
Indiana	119,029	123,987	129,570	136,073	142,874	4.2	4.5	5.0	5.0
Michigan	214,135	226,179	233,571	244,073	253,841	5.6	3.3	4.5	4.0
Ohio	235,724	247,449	257,506	270,450	281,741	5.0	4.1	5.0	4.2
Wisconsin	107,063	112,806	118,940	125,081	131,001	5.4	5.4	5.2	4.7
Plains									
Iowa	56,485	57,983	62,759	65,993	68,483	2.7	8.2	5.2	3.8
Kansas	52,794	55,304	58,690	62,363	65,676	4.8	6.1	6.3	5.3
Minnesota	104,110	109,304	117,293	123,010	129,996	5.0	7.3	4.9	5.7
Missouri	108,872	114,966	121,265	127,795	132,845	5.6	5.5	5.4	4.0
Nebraska	33,029	34,391	37,652	39,135	41,158	4.1	9.5	3.9	5.2
North Dakota	11,612	11,640	12,983	12,885	13,834	.2	11.5	-.8	7.4
South Dakota	13,541	13,753	15,076	15,549	16,324	1.6	9.6	3.1	5.0
Southeast									
Alabama	76,999	81,315	85,128	89,348	93,315	5.6	4.7	5.0	4.4
Arkansas	41,881	44,478	47,116	49,442	51,644	6.2	5.9	4.9	4.5
Florida	303,647	321,549	343,806	363,980	385,603	5.9	6.9	5.9	5.9
Georgia	145,373	155,959	167,956	178,875	191,208	7.3	7.7	6.5	6.9
Kentucky	68,343	71,727	75,612	80,435	84,658	5.0	5.4	6.4	5.3
Louisiana	77,892	81,484	85,099	89,067	93,261	4.6	4.4	4.7	4.7
Mississippi	42,308	44,591	47,150	49,437	52,175	5.4	5.7	4.9	5.5
North Carolina	140,667	150,877	161,179	172,154	181,384	7.3	6.8	6.8	5.4
South Carolina	65,688	69,506	73,435	77,686	81,742	5.8	5.7	5.8	5.2
Tennessee	103,614	110,511	115,697	121,934	127,942	6.7	4.7	5.4	4.9
Virginia	150,591	158,066	166,351	175,911	185,982	5.0	5.2	5.7	5.7
West Virginia	30,822	31,771	32,976	33,988	35,067	3.1	3.8	3.1	3.2
Southwest									
Arizona	79,335	86,479	93,391	100,160	107,660	9.0	8.0	7.2	7.5
New Mexico	28,362	30,357	31,826	33,269	34,628	7.0	4.8	4.5	4.1
Oklahoma	58,416	60,661	63,750	67,444	70,522	3.8	5.1	5.8	4.6
Texas	372,673	398,555	425,298	459,585	493,139	6.9	6.7	8.1	7.3
Rocky Mountain									
Colorado	84,115	90,853	97,735	105,143	113,797	8.0	7.6	7.6	8.2
Idaho	20,628	22,062	23,418	24,651	25,902	7.0	6.1	5.3	5.1
Montana	15,038	15,881	16,546	17,276	17,761	5.6	4.2	4.4	2.8
Utah	33,021	35,954	38,856	41,681	44,134	8.9	8.1	7.3	5.9
Wyoming	9,434	9,895	10,333	10,847	11,141	4.9	4.4	5.0	2.7
Far West									
Alaska	14,065	14,421	14,713	15,222	15,765	2.5	2.0	3.5	3.6
California	718,321	754,787	798,580	846,839	898,443	5.1	5.8	6.0	6.1
Hawaii	28,331	29,396	29,784	30,514	31,182	3.8	1.3	2.5	2.2
Nevada	34,105	37,508	41,412	44,510	47,515	10.0	10.4	7.5	6.8
Oregon	63,309	67,908	73,156	77,579	81,281	7.3	7.7	6.0	4.8
Washington	121,058	128,636	137,741	148,500	159,080	6.3	7.1	7.8	7.1
BEA regions									
New England	343,175	364,142	384,540	406,858	428,428	6.1	5.6	5.8	5.3
Mideast	1,130,903	1,183,752	1,245,254	1,303,943	1,369,139	4.7	5.2	4.7	5.0
Great Lakes	958,496	1,008,668	1,054,547	1,107,644	1,157,241	5.2	4.5	5.0	4.5
Plains	380,442	397,342	425,718	446,730	468,317	4.4	7.1	4.9	4.8
Southeast	1,247,824	1,321,834	1,401,506	1,482,256	1,563,982	5.9	6.0	5.8	5.5
Southwest	538,786	576,052	614,265	660,458	705,949	6.9	6.6	7.5	6.9
Rocky Mountain	162,235	174,645	186,887	199,598	212,735	7.6	7.0	6.8	6.6
Far West	979,189	1,032,656	1,095,386	1,163,164	1,233,266	5.5	6.1	6.2	6.0

^r Revised.

^p Preliminary.

Source: Bureau of Economic Analysis, U.S. Department of Commerce.

Table 3.—Population, as of July 1, by State and Region, 1994-98

[Thousands of persons]

	1994 ^r	1995 ^r	1996 ^r	1997 ^r	1998 ^r	Percent change			
						1994-95	1995-96	1996-97	1997-98
United States	260,289	262,765	265,190	267,744	270,299	1.0	0.9	1.0	1.0
New England									
Connecticut	3,265	3,262	3,264	3,267	3,274	-.1	.1	.1	.2
Maine	1,235	1,233	1,238	1,242	1,244	-.2	.4	.3	.2
Massachusetts	6,027	6,058	6,083	6,114	6,147	.5	.4	.5	.5
New Hampshire	1,133	1,146	1,160	1,172	1,185	1.1	1.2	1.0	1.1
Rhode Island	993	989	988	987	988	-.4	-.1	-.1	.1
Vermont	579	582	586	589	591	.5	.7	.5	.3
Mideast									
Delaware	709	719	727	735	744	1.4	1.1	1.1	1.2
District of Columbia	566	552	540	530	523	-2.5	-2.2	-1.9	-1.3
Maryland	4,985	5,023	5,058	5,095	5,135	.8	.7	.7	.8
New Jersey	7,916	7,962	8,008	8,058	8,115	.6	.6	.6	.7
New York	18,152	18,145	18,142	18,146	18,175	0	0	0	.2
Pennsylvania	12,040	12,040	12,034	12,011	12,001	0	0	-2	-1
Great Lakes									
Illinois	11,794	11,866	11,934	11,989	12,045	.6	.6	.5	.5
Indiana	5,741	5,787	5,827	5,865	5,899	.8	.7	.7	.6
Michigan	9,586	9,663	9,734	9,780	9,817	.8	.7	.5	.4
Ohio	11,100	11,138	11,170	11,193	11,209	.3	.3	.2	.1
Wisconsin	5,095	5,137	5,174	5,201	5,224	.8	.7	.5	.4
Plains									
Iowa	2,829	2,841	2,849	2,854	2,862	.4	.3	.2	.3
Kansas	2,558	2,575	2,585	2,601	2,629	.7	.4	.6	1.1
Minnesota	4,566	4,605	4,648	4,687	4,725	.9	.9	.8	.8
Missouri	5,291	5,337	5,369	5,408	5,439	.9	.6	.7	.6
Nebraska	1,622	1,635	1,648	1,657	1,663	.8	.8	.5	.4
North Dakota	640	641	643	641	638	.2	.3	-.3	-.5
South Dakota	729	735	737	738	738	.8	.3	.1	0
Southeast									
Alabama	4,239	4,270	4,291	4,322	4,352	.7	.5	.7	.7
Arkansas	2,451	2,480	2,505	2,523	2,538	1.2	1.0	.7	.6
Florida	13,954	14,180	14,425	14,677	14,916	1.6	1.7	1.7	1.6
Georgia	7,046	7,189	7,334	7,490	7,642	2.0	2.0	2.1	2.0
Kentucky	3,824	3,856	3,883	3,910	3,936	.8	.7	.7	.7
Louisiana	4,307	4,328	4,340	4,354	4,369	.5	.3	.3	.3
Mississippi	2,663	2,690	2,710	2,732	2,752	1.0	.7	.8	.7
North Carolina	7,061	7,186	7,309	7,431	7,546	1.8	1.7	1.7	1.5
South Carolina	3,667	3,699	3,737	3,788	3,836	.9	1.0	1.4	1.3
Tennessee	5,158	5,235	5,307	5,372	5,431	1.5	1.4	1.2	1.1
Virginia	6,539	6,602	6,667	6,737	6,791	1.0	1.0	1.0	.8
West Virginia	1,819	1,822	1,820	1,815	1,811	.2	-.1	-.3	-.2
Southwest									
Arizona	4,148	4,307	4,432	4,553	4,669	3.8	2.9	2.7	2.5
New Mexico	1,654	1,684	1,708	1,724	1,737	1.8	1.4	.9	.8
Oklahoma	3,248	3,271	3,296	3,322	3,347	.7	.8	.8	.8
Texas	18,348	18,694	19,033	19,386	19,760	1.9	1.8	1.9	1.9
Rocky Mountain									
Colorado	3,654	3,738	3,814	3,892	3,971	2.3	2.0	2.0	2.0
Idaho	1,134	1,164	1,186	1,209	1,229	2.6	1.9	1.9	1.7
Montana	855	868	877	879	880	1.5	1.0	.2	.1
Utah	1,942	1,991	2,022	2,065	2,100	2.5	1.6	2.1	1.7
Wyoming	475	478	480	480	481	.6	.4	0	.2
Far West									
Alaska	601	602	605	610	614	.2	.5	.8	.7
California	31,295	31,472	31,762	32,182	32,667	.6	.9	1.3	1.5
Hawaii	1,176	1,183	1,187	1,192	1,193	.6	.3	.4	.1
Nevada	1,458	1,528	1,600	1,679	1,747	4.8	4.7	4.9	4.1
Oregon	3,087	3,141	3,195	3,243	3,282	1.7	1.7	1.5	1.2
Washington	5,336	5,433	5,519	5,614	5,689	1.8	1.6	1.7	1.3
BEA regions									
New England	13,233	13,271	13,319	13,372	13,430	.3	.4	.4	.4
Mideast	44,368	44,442	44,509	44,576	44,693	.2	.2	.2	.3
Great Lakes	43,316	43,590	43,839	44,028	44,195	.6	.6	.4	.4
Plains	18,235	18,369	18,478	18,587	18,695	.7	.6	.6	.6
Southeast	62,727	63,538	64,328	65,151	65,922	1.3	1.2	1.3	1.2
Southwest	27,397	27,956	28,469	28,985	29,512	2.0	1.8	1.8	1.8
Rocky Mountain	8,060	8,240	8,379	8,525	8,661	2.2	1.7	1.7	1.6
Far West	42,953	43,360	43,869	44,520	45,192	.9	1.2	1.5	1.5

^r Revised.

Source: Bureau of the Census, U.S. Department of Commerce.

Table 4.—Per Capita Personal Income, by State and Region, 1997-1998

	Dollars		Rank in United States		Percent of national average		Percent change, 1997-98
	1997 ^r	1998 ^p	1997	1998	1997	1998	
United States	25,288	26,412			100	100	4.4
Connecticut	35,863	37,598	1	1	142	142	4.8
District of Columbia	35,704	37,278	(1)	(1)	141	141	4.4
New Jersey	32,356	33,937	2	2	128	128	4.9
Massachusetts	31,239	32,797	3	3	124	124	5.0
New York	30,250	31,734	4	4	120	120	4.9
Maryland	28,674	29,943	5	5	113	113	4.4
Delaware	28,493	29,814	6	6	113	113	4.6
New Hampshire	27,766	29,022	7	7	110	110	4.5
Illinois	27,688	28,873	8	8	109	109	4.3
Colorado	27,015	28,657	9	9	107	108	6.1
Washington	26,451	27,961	11	10	105	106	5.7
Minnesota	26,243	27,510	13	11	104	104	4.8
California	26,314	27,503	12	12	104	104	4.5
Virginia	26,109	27,385	14	13	103	104	4.9
Nevada	26,514	27,200	10	14	105	103	2.6
Rhode Island	25,667	26,797	16	15	101	101	4.4
Pennsylvania	25,670	26,792	15	16	102	101	4.4
Hawaii	25,598	26,137	17	17	101	99	2.1
Michigan	24,956	25,857	19	18	99	98	3.6
Florida	24,799	25,852	20	19	98	98	4.2
Alaska	24,969	25,675	18	20	99	97	2.8
Ohio	24,163	25,134	21	21	96	95	4.0
Wisconsin	24,048	25,079	22	22	95	95	4.3
Georgia	23,882	25,020	25	23	94	95	4.8
Kansas	23,972	24,981	23	24	95	95	4.2
Texas	23,707	24,957	26	25	94	94	5.3
Oregon	23,920	24,766	24	26	95	94	3.5
Nebraska	23,618	24,754	28	27	93	94	4.8
Missouri	23,629	24,427	27	28	93	92	3.4
Indiana	23,202	24,219	29	29	92	92	4.4
Vermont	23,017	24,175	32	30	91	92	5.0
North Carolina	23,168	24,036	30	31	92	91	3.7
Iowa	23,120	23,925	31	32	91	91	3.5
Tennessee	22,699	23,559	33	33	90	89	3.8
Wyoming	22,596	23,167	34	34	89	88	2.5
Arizona	21,998	23,060	35	35	87	87	4.8
Maine	21,937	22,952	36	36	87	87	4.6
South Dakota	21,076	22,114	37	37	83	84	4.9
North Dakota	20,103	21,675	45	38	79	82	7.8
Kentucky	20,570	21,506	39	39	81	81	4.6
Alabama	20,672	21,442	38	40	82	81	3.7
Louisiana	20,458	21,346	41	41	81	81	4.3
South Carolina	20,508	21,309	40	42	81	81	3.9
Idaho	20,392	21,081	42	43	81	80	3.4
Oklahoma	20,305	21,072	43	44	80	80	3.8
Utah	20,185	21,019	44	45	80	80	4.1
Arkansas	19,595	20,346	47	46	77	77	3.8
Montana	19,660	20,172	46	47	78	76	2.6
New Mexico	19,298	19,936	48	48	76	75	3.3
West Virginia	18,724	19,362	49	49	74	73	3.4
Mississippi	18,098	18,958	50	50	72	72	4.8
BEA regions							
New England	30,427	31,901	1	1	120	121	4.8
Mideast	29,252	30,634	2	2	116	116	4.7
Far West	26,127	27,290	3	3	103	103	4.5
Great Lakes	25,158	26,185	4	4	99	99	4.1
Plains	24,034	25,051	5	5	95	95	4.2
Rocky Mountain	23,414	24,563	6	6	93	93	4.9
Southwest	22,787	23,921	7	7	90	91	5.0
Southeast	22,751	23,725	8	8	90	90	4.3

^r Revised.
^p Preliminary.
1. Not ranked.

Note: States and regions listed based on their rank in per capita income in 1998.
Source: Bureau of Economic Analysis, U.S. Department of Commerce.

Table 5.—Personal Income by Component, by State and Region, 1997-98

	Percent change				Percent change in personal income	Contribution to percent change in personal income (percentage points)			Dollar change (millions)			
	Personal income	Net earnings ¹	Dividends, interest, and rent	Transfer payments		Net earnings ¹	Dividends, interest, and rent	Transfer payments	Personal income	Net earnings ¹	Dividends, interest, and rent	Transfer payments
United States	5.4	6.8	2.1	3.5	5.4	4.5	0.4	0.6	368,407	305,154	24,669	38,585
New England												
Connecticut	5.1	6.2	1.8	3.8	5.1	4.2	.3	.5	5,926	4,935	403	588
Maine	4.8	6.2	1.5	3.6	4.8	3.8	.3	.7	1,316	1,041	73	202
Massachusetts	5.5	6.9	2.2	3.6	5.5	4.6	.4	.6	10,597	8,768	765	1,064
New Hampshire	5.7	7.1	1.9	3.2	5.7	4.9	.4	.4	1,846	1,599	115	134
Rhode Island	4.5	5.6	1.3	3.9	4.5	3.5	.2	.8	1,148	890	55	204
Vermont	5.4	7.0	2.0	3.5	5.4	4.5	.4	.6	736	607	54	76
Mideast												
Delaware	5.8	7.4	1.9	3.3	5.8	5.0	.3	.5	1,224	1,052	73	97
District of Columbia	3.1	3.8	.8	2.9	3.1	2.3	.1	.6	582	444	24	115
Maryland	5.2	6.4	1.9	4.0	5.2	4.3	.3	.6	7,663	6,343	473	847
New Jersey	5.6	7.2	1.6	3.4	5.6	4.9	.3	.5	14,662	12,651	820	1,191
New York	5.1	6.8	1.5	2.7	5.1	4.3	.3	.5	27,852	23,624	1,468	2,760
Pennsylvania	4.3	5.5	1.4	3.0	4.3	3.5	.2	.6	13,215	10,758	732	1,725
Great Lakes												
Illinois	4.8	5.8	2.0	3.1	4.8	4.0	.4	.4	15,818	13,154	1,221	1,442
Indiana	5.0	6.1	2.0	2.8	5.0	4.3	.3	.4	6,801	5,804	430	567
Michigan	4.0	4.7	1.4	3.6	4.0	3.2	.2	.6	9,768	7,818	579	1,371
Ohio	4.2	5.0	1.8	3.1	4.2	3.3	.3	.5	11,291	9,045	785	1,461
Wisconsin	4.7	5.8	1.9	3.1	4.7	4.0	.3	.5	5,920	4,942	401	576
Plains												
Iowa	3.8	4.4	2.2	2.7	3.8	3.0	.4	.4	2,490	1,954	263	272
Kansas	5.3	6.5	3.0	3.0	5.3	4.3	.5	.4	3,313	2,700	337	276
Minnesota	5.7	7.1	2.2	2.8	5.7	4.9	.4	.4	6,986	6,053	451	482
Missouri	4.0	4.5	2.1	3.9	4.0	2.9	.4	.7	5,050	3,722	481	847
Nebraska	5.2	6.2	2.7	3.5	5.2	4.2	.5	.5	2,023	1,629	189	205
North Dakota	7.4	10.3	1.5	3.2	7.4	6.5	.3	.6	949	832	36	80
South Dakota	5.0	5.9	3.5	3.0	5.0	3.8	.6	.5	775	597	98	80
Southeast												
Alabama	4.4	5.0	2.2	4.1	4.4	3.3	.3	.8	3,967	2,933	277	758
Arkansas	4.5	5.1	2.7	3.8	4.5	3.3	.4	.8	2,202	1,621	191	391
Florida	5.9	8.2	1.9	4.2	5.9	4.7	.5	.8	21,623	17,013	1,711	2,900
Georgia	6.9	8.5	2.8	3.6	6.9	5.9	.4	.5	12,333	10,627	764	943
Kentucky	5.3	6.2	2.3	4.3	5.3	4.0	.3	.9	4,223	3,238	272	713
Louisiana	4.7	5.8	2.0	3.1	4.7	3.8	.3	.7	4,194	3,350	262	582
Mississippi	5.5	6.8	2.4	3.7	5.5	4.4	.3	.9	2,738	2,166	146	426
North Carolina	5.4	6.1	3.0	4.5	5.4	4.2	.4	.7	9,230	7,183	767	1,279
South Carolina	5.2	6.2	2.2	4.1	5.2	4.1	.3	.8	4,056	3,195	249	612
Tennessee	4.9	5.7	2.2	3.9	4.9	3.9	.3	.7	6,008	4,782	369	857
Virginia	5.7	7.0	2.2	3.9	5.7	4.8	.4	.6	10,071	8,413	674	984
West Virginia	3.2	3.8	1.0	2.9	3.2	2.3	.2	.8	1,079	766	52	261
Southwest												
Arizona	7.5	9.5	3.1	4.1	7.5	6.2	.5	.7	7,500	6,246	545	708
New Mexico	4.1	4.6	2.1	3.8	4.1	3.0	.3	.8	1,359	991	112	257
Oklahoma	4.6	5.4	2.0	3.7	4.6	3.5	.3	.7	3,078	2,362	212	505
Texas	7.3	8.8	2.7	4.2	7.3	6.3	.4	.6	33,554	28,941	1,767	2,846
Rocky Mountain												
Colorado	8.2	10.3	2.9	4.4	8.2	7.2	.5	.6	8,654	7,519	542	593
Idaho	5.1	5.8	3.1	4.1	5.1	3.9	.5	.7	1,251	958	130	163
Montana	2.8	2.7	2.2	3.6	2.8	1.6	.4	.7	485	284	74	127
Utah	5.9	6.8	2.9	3.9	5.9	5.0	.4	.5	2,453	2,068	161	224
Wyoming	2.7	2.8	1.9	3.6	2.7	1.7	.4	.6	294	187	43	63
Far West												
Alaska	3.6	3.5	1.6	5.2	3.6	2.4	.2	1.0	543	359	31	152
California	6.1	7.8	2.3	2.9	6.1	5.2	.4	.4	51,604	44,392	3,471	3,742
Hawaii	2.2	1.9	1.6	4.1	2.2	1.2	.3	.7	668	376	79	212
Nevada	6.8	8.1	3.2	4.7	6.8	5.5	.6	.7	3,005	2,470	246	290
Oregon	4.8	5.6	2.9	3.6	4.8	3.6	.5	.6	3,702	2,828	414	460
Washington	7.1	8.9	3.0	3.9	7.1	6.0	.5	.6	10,580	8,922	781	876
BEA regions												
New England	5.3	6.6	2.0	3.7	5.3	4.4	.4	.6	21,570	17,840	1,464	2,268
Mideast	5.0	6.5	1.6	3.0	5.0	4.2	.3	.5	65,196	54,871	3,591	6,735
Great Lakes	4.5	5.4	1.8	3.2	4.5	3.7	.3	.5	49,597	40,765	3,417	5,416
Plains	4.8	5.9	2.3	3.2	4.8	3.9	.4	.5	21,587	17,488	1,857	2,242
Southeast	5.5	6.8	2.2	4.0	5.5	4.4	.4	.7	81,726	65,284	5,734	10,707
Southwest	6.9	8.4	2.7	4.1	6.9	5.8	.4	.7	45,491	38,540	2,636	4,316
Rocky Mountain	6.6	8.0	2.8	4.1	6.6	5.5	.5	.6	13,137	11,017	949	1,170
Far West	6.0	7.6	2.4	3.2	6.0	5.1	.4	.5	70,102	59,348	5,022	5,732

1. Net earnings is earnings by place of work—the sum of wage and salary disbursements (payrolls), other labor income, and proprietors' income—less personal contributions for social insurance plus an adjustment to convert earnings by place of work to a place-of-residence basis.

Note: Estimates may not add to totals due to rounding.
Source: Bureau of Economic Analysis, U.S. Department of Commerce.

Table 6.—Earnings by Major Industry, by State and Region, 1997-98

	Percent change												
	Net earnings ¹	Earnings by place of work											
		Total	Private goods-producing industries				Private services-producing industries						Government
			Total ²	Farms	Construction	Manufacturing	Total	Transportation and public utilities	Wholesale trade	Retail trade	Finance, insurance, and real estate	Services	
United States	6.8	6.8	5.6	-3.2	10.1	4.5	8.1	5.8	7.9	6.0	12.0	8.2	3.6
New England													
Connecticut	6.2	6.0	4.1	3.7	6.6	3.3	7.5	8.5	2.8	5.4	11.4	7.1	2.2
Maine	6.2	6.1	4.5	49.2	11.0	1.0	7.4	6.1	4.1	7.1	11.5	7.4	4.0
Massachusetts	6.9	6.9	5.6	-8.8	12.9	3.6	7.7	6.2	9.7	5.6	11.0	7.1	4.7
New Hampshire	7.1	7.2	7.2	20.5	15.9	4.7	8.2	8.3	7.3	6.8	11.9	8.0	1.6
Rhode Island	5.6	5.3	2.9	11.8	10.3	.7	7.4	6.7	3.3	5.3	15.6	6.9	1.6
Vermont	7.0	6.9	10.9	57.8	16.2	6.3	6.0	7.2	3.4	3.7	9.1	6.4	2.1
Mideast													
Delaware	7.4	7.6	6.3	65.9	6.0	5.0	8.9	7.3	6.4	5.8	8.9	10.8	5.4
District of Columbia	3.8	6.0	4.8	(³)	1.9	11.3	8.8	-10.0	1.3	2.5	15.6	10.2	2.4
Maryland	6.4	6.2	6.7	59.6	7.1	4.6	6.2	5.1	5.8	4.0	8.2	6.5	5.7
New Jersey	7.2	7.2	4.9	0	5.9	4.4	8.6	3.3	10.1	4.6	16.3	8.6	4.3
New York	6.8	6.8	6.4	70.3	12.9	4.0	7.7	5.1	7.2	5.5	9.8	7.3	2.7
Pennsylvania	5.5	5.4	4.3	39.5	6.5	3.0	6.6	5.3	6.5	3.8	10.6	6.7	2.1
Great Lakes													
Illinois	5.8	5.8	2.2	-40.2	8.0	1.9	7.9	5.0	6.4	5.3	9.9	9.0	3.7
Indiana	6.1	6.1	5.6	-21.6	9.1	5.7	6.9	5.9	6.8	4.7	10.2	7.2	4.8
Michigan	4.7	4.7	5.2	-27.0	9.9	4.7	5.5	4.4	6.5	5.2	9.8	4.6	.3
Ohio	5.0	5.0	2.6	-24.4	7.3	2.3	7.2	6.2	6.8	5.8	11.5	6.9	2.7
Wisconsin	5.8	5.7	5.3	202.4	9.7	2.9	6.7	5.7	7.7	5.6	7.1	6.9	3.2
Plains													
Iowa	4.4	4.6	.2	-27.6	9.4	5.2	8.1	7.3	6.7	6.7	12.3	7.9	3.1
Kansas	6.5	6.6	6.2	4.8	8.8	5.6	7.8	2.3	6.3	6.8	9.8	10.2	3.3
Minnesota	7.1	7.1	5.9	-16.9	14.2	4.7	8.6	5.6	7.1	7.8	13.3	8.5	3.2
Missouri	4.5	4.5	.3	-69.5	6.0	1.8	6.8	3.4	5.8	5.6	12.7	6.8	3.4
Nebraska	6.2	6.1	8.4	9.8	15.9	4.4	6.3	-2.9	6.4	5.0	11.3	8.9	1.8
North Dakota	10.3	9.6	30.8	256.2	10.4	6.6	5.2	-5	5.6	4.1	11.9	6.1	1.5
South Dakota	5.9	5.9	7.4	4.1	10.4	9.0	6.2	1.8	5.9	4.2	12.9	6.6	1.9
Southeast													
Alabama	5.0	4.9	4.0	14.8	7.9	2.0	6.2	2.7	6.3	5.3	8.4	7.0	2.6
Arkansas	5.1	5.1	3.4	-6.4	7.4	4.1	7.1	5.9	7.5	7.6	9.5	6.7	2.4
Florida	8.2	8.2	8.2	19.5	11.2	4.9	9.1	5.7	7.2	6.8	14.9	9.3	4.4
Georgia	8.5	8.5	7.1	-4	13.0	5.6	9.9	8.8	11.1	6.3	13.6	10.1	5.0
Kentucky	6.2	6.2	5.4	20.7	6.1	3.9	7.7	11.8	8.2	6.8	6.6	6.8	3.1
Louisiana	5.8	5.8	6.8	-25.2	16.4	3.0	5.9	4.8	7.5	6.2	10.1	4.9	4.0
Mississippi	6.8	6.8	9.4	25.0	16.8	5.7	5.8	2.4	10.5	6.2	9.3	4.9	5.0
North Carolina	6.1	6.1	2.7	-17.8	8.7	2.9	8.7	4.4	6.9	6.1	14.6	9.7	5.2
South Carolina	6.2	6.1	3.5	-25.5	10.4	2.2	8.2	4.1	10.5	6.4	13.1	8.5	5.4
Tennessee	5.7	5.7	2.8	-44.3	6.2	2.2	7.9	8.2	7.2	6.7	14.3	6.9	2.8
Virginia	7.0	7.0	3.7	3.8	4.5	3.1	9.7	11.8	6.1	6.2	13.1	10.2	3.0
West Virginia	3.8	3.5	1.6	(³)	1.1	2.2	5.0	2.6	2.9	4.8	6.8	5.9	2.4
Southwest													
Arizona	9.5	9.5	9.7	5.5	14.1	8.4	10.6	6.7	11.6	7.9	14.7	11.0	4.8
New Mexico	4.6	4.6	2.4	-1.6	6.4	1.3	6.7	3.9	4.9	5.8	8.4	7.5	1.8
Oklahoma	5.4	5.4	3.0	-60.1	12.4	6.9	7.7	5.2	7.3	5.5	8.2	9.4	2.6
Texas	8.8	8.9	8.9	-3.0	13.1	8.4	9.8	8.4	12.8	7.3	13.1	9.5	4.7
Rocky Mountain													
Colorado	10.3	10.3	11.6	36.8	18.3	6.5	11.1	9.8	8.7	6.8	16.6	11.9	4.8
Idaho	5.8	5.8	3.2	-6.6	3.8	4.7	7.8	6.7	6.9	6.9	12.0	7.8	4.7
Montana	2.7	2.9	-1.3	-70.0	12.2	8.3	4.2	-3.8	5.7	3.4	10.2	5.6	3.3
Utah	6.8	6.7	5.5	28.2	10.3	2.6	8.3	6.2	9.1	4.6	13.3	8.7	3.3
Wyoming	2.8	2.8	.6	(³)	11.5	4.7	4.0	-2.1	5.8	4.8	6.9	5.6	3.4
Far West													
Alaska	3.5	3.5	2.5	9.1	3.0	-4.3	6.1	6.6	7.7	3.2	7.6	6.9	-2
California	7.8	7.8	8.3	4.0	14.4	6.9	8.5	6.0	8.2	7.0	15.1	7.7	4.2
Hawaii	1.9	1.8	.2	8.2	-1.4	.6	2.4	-1	2.9	-3	4.4	3.5	1.1
Nevada	8.1	8.0	7.9	62.5	9.5	7.0	8.1	6.4	9.8	8.3	14.7	7.0	8.1
Oregon	5.6	5.5	4.4	3.5	2.5	5.2	6.3	3.2	3.4	6.3	9.2	7.1	4.5
Washington	8.9	9.0	6.2	17.2	4.7	6.3	12.0	4.4	8.0	7.0	12.1	16.5	2.8
BEA regions													
New England	6.6	6.5	5.3	16.0	11.3	3.4	7.6	7.0	6.8	5.7	11.4	7.2	3.4
Mideast	6.5	6.5	5.4	46.2	8.6	3.9	7.5	4.4	7.6	4.6	10.7	7.5	3.3
Great Lakes	5.4	5.4	3.9	-21.8	8.6	3.4	7.0	5.4	6.7	5.4	10.0	7.1	2.8
Plains	5.9	5.9	4.2	-11.4	10.2	4.2	7.5	3.3	6.5	6.4	12.4	8.0	3.0
Southeast	6.8	6.8	5.0	-4	9.5	3.5	8.4	6.9	7.9	6.4	13.1	8.6	4.0
Southwest	8.4	8.4	8.2	-11.8	12.9	8.1	9.6	7.8	12.0	7.1	12.9	9.6	4.2
Rocky Mountain	8.0	8.0	7.3	-5.6	13.7	5.2	9.3	7.2	8.3	5.9	14.8	10.1	4.2
Far West	7.6	7.6	7.5	6.0	10.9	6.6	8.5	5.4	7.7	6.7	14.1	8.5	3.9

1. Net earnings is earnings by place of work—the sum of wage and salary disbursements (payrolls), other labor income, and proprietors' income—less personal contributions for social insurance plus an adjustment to convert earnings by place of work to a place-of-residence basis.

2. Also includes mining and agricultural services, forestry, and fishing.

3. Not meaningful.

Source: Bureau of Economic Analysis, U.S. Department of Commerce.

Table 7.—Earnings by Industry Group, by State and Region, 1997-98

	Percent change in earnings by place of work ¹	Contribution to percent change in earnings by place of work (percentage points)			Dollar change (millions)			
		Private goods-producing industries	Private services-producing industries	Government	Earnings by place of work	Private goods-producing industries	Private services-producing industries	Government
United States	6.8	1.4	4.8	0.5	326,628	69,852	231,092	25,684
New England								
Connecticut	6.0	1.1	4.7	.2	4,814	861	3,758	195
Maine	6.1	1.2	4.2	.7	1,089	216	756	117
Massachusetts	6.9	1.3	5.1	.5	9,615	1,751	7,135	728
New Hampshire	7.2	2.2	4.8	.2	1,520	457	1,025	37
Rhode Island	5.3	.7	4.4	.3	861	116	704	41
Vermont	6.9	3.2	3.3	.3	636	297	308	30
Mideast								
Delaware	7.6	2.2	4.8	.7	1,237	353	777	107
District of Columbia	6.0	.2	4.8	1.0	2,112	83	1,690	339
Maryland	6.2	1.1	3.8	1.2	5,636	1,032	3,510	1,093
New Jersey	7.2	1.0	5.6	.6	12,442	1,749	9,660	1,033
New York	6.8	1.0	5.4	.4	26,889	4,118	21,263	1,508
Pennsylvania	5.4	1.2	3.9	.3	11,248	2,538	8,175	536
Great Lakes								
Illinois	5.8	.6	4.8	.5	14,142	1,410	11,637	1,096
Indiana	6.1	2.2	3.3	.6	6,061	2,199	3,297	565
Michigan	4.7	2.0	2.7	0	8,273	3,444	4,761	69
Ohio	5.0	.9	3.8	.3	9,800	1,740	7,384	676
Wisconsin	5.7	1.9	3.4	.4	5,075	1,682	3,015	378
Plains								
Iowa	4.6	.1	4.1	.4	2,168	29	1,931	209
Kansas	6.6	1.8	4.3	.5	2,885	790	1,860	235
Minnesota	7.1	1.7	5.0	.4	6,621	1,608	4,638	374
Missouri	4.5	.1	4.0	.5	4,170	87	3,656	428
Nebraska	6.1	2.2	3.6	.3	1,772	648	1,040	85
North Dakota	9.6	6.2	3.2	.3	875	561	287	27
South Dakota	5.9	2.2	3.4	.3	656	246	377	33
Southeast								
Alabama	4.9	1.3	3.2	.5	3,048	782	1,972	295
Arkansas	5.1	1.2	3.6	.4	1,761	399	1,238	124
Florida	8.2	1.4	6.2	.7	18,167	3,047	13,622	1,497
Georgia	8.5	1.7	6.0	.7	11,438	2,333	8,099	1,006
Kentucky	6.2	1.8	3.9	.5	3,489	1,015	2,191	283
Louisiana	5.8	1.9	3.3	.7	3,583	1,165	2,004	415
Mississippi	6.8	3.0	2.9	1.0	2,259	989	952	318
North Carolina	6.1	.9	4.4	.8	7,807	1,181	5,582	1,044
South Carolina	6.1	1.2	4.0	1.0	3,366	633	2,204	528
Tennessee	5.7	.8	4.6	.4	5,176	729	4,120	326
Virginia	7.0	.8	5.6	.6	8,596	947	6,859	791
West Virginia	3.5	.5	2.6	.5	748	97	553	98
Southwest								
Arizona	9.5	2.3	6.5	.7	6,702	1,632	4,560	510
New Mexico	4.6	.5	3.6	.4	1,047	114	830	103
Oklahoma	5.4	.8	4.1	.5	2,500	381	1,892	227
Texas	8.9	2.5	5.7	.6	31,020	8,798	19,960	2,261
Rocky Mountain								
Colorado	10.3	2.6	7.0	.7	8,023	2,038	5,432	552
Idaho	5.8	1.1	4.0	.8	1,012	184	695	133
Montana	2.9	-.3	2.5	.6	327	-31	283	73
Utah	6.7	1.4	4.8	.5	2,200	454	1,572	174
Wyoming	2.8	.2	1.9	.8	206	13	137	55
Far West								
Alaska	3.5	.5	3.0	-.1	414	64	356	-7
California	7.8	2.0	5.2	.6	47,461	11,923	31,848	3,690
Hawaii	1.8	0	1.5	.3	391	6	324	61
Nevada	8.0	1.5	5.5	1.0	2,674	514	1,820	340
Oregon	5.5	1.3	3.6	.6	3,092	728	2,004	360
Washington	9.0	1.6	6.9	.5	9,529	1,700	7,337	492
BEA regions								
New England	6.5	1.3	4.8	.4	18,535	3,699	13,685	1,150
Mideast	6.5	1.1	4.9	.5	59,563	9,873	45,077	4,613
Great Lakes	5.4	1.3	3.8	.3	43,351	10,473	30,093	2,784
Plains	5.9	1.2	4.2	.4	19,147	3,969	13,789	1,388
Southeast	6.8	1.3	4.8	.7	69,439	13,319	49,396	6,725
Southwest	8.4	2.2	5.6	.6	41,267	10,925	27,241	3,102
Rocky Mountain	8.0	1.8	5.5	.7	11,767	2,660	8,120	987
Far West	7.6	1.8	5.2	.6	63,560	14,935	43,690	4,934

1. Earnings by place of work is the sum of wage and salary disbursements (payrolls), other labor income, and proprietors' income.

Note: Estimates may not add to totals due to rounding.
Source: Bureau of Economic Analysis, U.S. Department of Commerce.

Table 8.—Personal Income, by State and Region, 1997:IV-1998:IV

[Millions of dollars, seasonally adjusted at annual rates]

	1997	1998				Percent change from preceding quarter ¹			
	IV ^r	I ^r	II ^r	III ^r	IV ^p	1998:I	1998:II	1998:III	1998:IV
United States	6,898,259	7,005,778	7,091,306	7,177,065	7,282,078	1.6	1.2	1.2	1.5
New England									
Connecticut	119,755	121,224	122,235	123,680	125,257	1.2	.8	1.2	1.3
Maine	27,715	27,808	28,346	28,852	29,227	.3	1.9	1.8	1.3
Massachusetts	194,969	196,853	200,408	203,392	205,768	1.0	1.8	1.5	1.2
New Hampshire	33,436	33,600	34,074	34,791	35,103	.5	1.4	2.1	.9
Rhode Island	25,877	26,087	26,311	26,670	26,885	.8	.9	1.4	.8
Vermont	13,864	14,021	14,197	14,372	14,548	1.1	1.3	1.2	1.2
Mideast									
Delaware	21,422	21,877	22,075	22,146	22,581	2.1	.9	.3	2.0
District of Columbia	19,085	19,178	19,378	19,645	19,802	.5	1.0	1.4	.8
Maryland	148,983	150,629	152,795	154,854	156,733	1.1	1.4	1.3	1.2
New Jersey	265,466	270,022	272,517	277,702	281,350	1.7	.9	1.9	1.3
New York	556,901	565,261	574,244	579,681	587,929	1.5	1.6	.9	1.4
Pennsylvania	313,471	317,115	320,357	322,932	325,754	1.2	1.0	.8	.9
Great Lakes									
Illinois	338,040	342,075	345,833	349,029	354,197	1.2	1.1	.9	1.5
Indiana	138,619	140,442	141,886	143,302	145,868	1.3	1.0	1.0	1.8
Michigan	247,430	252,523	254,019	251,642	257,178	2.1	.6	-9	2.2
Ohio	275,181	278,262	280,222	282,477	286,005	1.1	.7	.8	1.2
Wisconsin	127,501	128,366	130,170	131,788	133,678	.7	1.4	1.2	1.4
Plains									
Iowa	67,105	67,039	67,724	68,535	70,634	-1	1.0	1.2	3.1
Kansas	63,581	64,340	65,196	65,722	67,446	1.2	1.3	.8	2.6
Minnesota	125,434	127,823	129,435	129,908	132,820	1.9	1.3	.4	2.2
Missouri	129,637	130,528	131,922	133,454	135,478	.7	1.1	1.2	1.5
Nebraska	39,604	40,072	40,722	41,206	42,633	1.2	1.6	1.2	3.5
North Dakota	13,072	13,603	13,639	13,712	14,381	4.1	.3	.5	4.9
South Dakota	15,729	15,998	16,148	16,201	16,949	1.7	.9	.3	4.6
Southeast									
Alabama	90,626	91,879	92,882	93,831	94,668	1.4	1.1	1.0	.9
Arkansas	50,338	50,807	51,279	51,613	52,879	.9	.9	.7	2.5
Florida	370,723	376,898	382,795	388,765	393,954	1.7	1.6	1.6	1.3
Georgia	182,310	186,461	189,051	193,232	196,090	2.3	1.4	2.2	1.5
Kentucky	81,777	83,186	84,103	85,159	86,184	1.7	1.1	1.3	1.2
Louisiana	90,811	91,867	93,106	93,465	94,605	1.2	1.3	.4	1.2
Mississippi	50,330	51,188	51,704	52,521	53,288	1.7	1.0	1.6	1.5
North Carolina	175,453	178,193	180,376	182,522	184,445	1.6	1.2	1.2	1.1
South Carolina	79,071	79,883	80,986	82,585	83,513	1.0	1.4	2.0	1.1
Tennessee	124,284	125,290	127,349	128,731	130,400	.8	1.6	1.1	1.3
Virginia	179,473	182,257	184,538	187,303	189,830	1.6	1.3	1.5	1.3
West Virginia	34,337	34,647	34,833	35,193	35,596	.9	.5	1.0	1.1
Southwest									
Arizona	102,744	104,689	106,785	108,715	110,453	1.9	2.0	1.8	1.6
New Mexico	33,689	34,192	34,496	34,711	35,113	1.5	.9	.6	1.2
Oklahoma	68,676	69,496	70,059	70,661	71,873	1.2	.8	.9	1.7
Texas	471,352	483,551	489,048	496,685	503,271	2.6	1.1	1.6	1.3
Rocky Mountain									
Colorado	108,182	111,772	112,954	114,413	116,048	3.3	1.1	1.3	1.4
Idaho	25,017	25,385	25,566	25,990	26,667	1.5	.7	1.7	2.6
Montana	17,565	17,508	17,710	17,665	18,161	-3	1.2	-3	2.8
Utah	42,393	43,206	43,938	44,395	44,998	1.9	1.7	1.0	1.4
Wyoming	10,972	11,002	10,972	11,240	11,351	.3	-3	2.4	1.0
Far West									
Alaska	15,393	15,786	15,713	15,693	15,868	2.6	-5	-1	1.1
California	863,952	880,361	890,534	904,736	918,140	1.9	1.2	1.6	1.5
Hawaii	30,669	30,990	31,127	31,223	31,388	1.0	.4	.3	.5
Nevada	45,450	46,298	47,099	47,975	48,689	1.9	1.7	1.9	1.5
Oregon	78,803	80,236	80,865	81,395	82,629	1.8	.8	.7	1.5
Washington	151,995	154,003	157,588	160,954	163,774	1.3	2.3	2.1	1.8
BEA regions									
New England	415,615	419,594	425,572	431,757	436,789	1.0	1.4	1.5	1.2
Mideast	1,325,328	1,344,082	1,361,366	1,376,961	1,394,148	1.4	1.3	1.1	1.2
Great Lakes	1,126,771	1,141,669	1,152,129	1,158,239	1,176,925	1.3	.9	.5	1.6
Plains	454,161	459,403	464,785	468,739	480,341	1.2	1.2	.9	2.5
Southeast	1,509,533	1,532,555	1,553,001	1,574,919	1,595,452	1.5	1.3	1.4	1.3
Southwest	676,461	691,928	700,388	710,772	720,710	2.3	1.2	1.5	1.4
Rocky Mountain	204,128	208,873	211,139	213,703	217,225	2.3	1.1	1.2	1.6
Far West	1,186,262	1,207,673	1,222,926	1,241,975	1,260,488	1.8	1.3	1.6	1.5

^r Revised.

^p Preliminary.

1. Percent changes are expressed at quarterly rates.

Note: Estimates may not add to totals due to rounding.

Source: Bureau of Economic Analysis, U.S. Department of Commerce.