

**FOR WIRE TRANSMISSION: 9:00 A.M. EDT, MONDAY, SEPTEMBER 14, 1998**

Duke Tran: (202) 606-5344 (Analysis)  
Kathy Albetski: 606-5360 (Estimates)

BEA 98-29

**1997 STATE PER CAPITA PERSONAL INCOME  
and STATE PERSONAL INCOME (Revised)**

Connecticut and Texas led the nation in per capita personal income growth in 1997, according to revised estimates released by the Commerce Department's Bureau of Economic Analysis. Except for North Dakota -- where per capita income declined largely due to a decline in farm earnings, reflecting a drop in wheat production -- per capita income grew in all states.

For the nation, per capita income grew 4.7 percent in 1997 to \$25,298, up from \$24,169 in 1996 (see table 1). The 4.7-percent growth rate in per capita income was more than double the 1.9-percent increase in prices paid by U.S. consumers in 1997 (as measured by the price index for personal consumption expenditures). All states except North Dakota had increases in per capita income that exceeded the increase in prices.

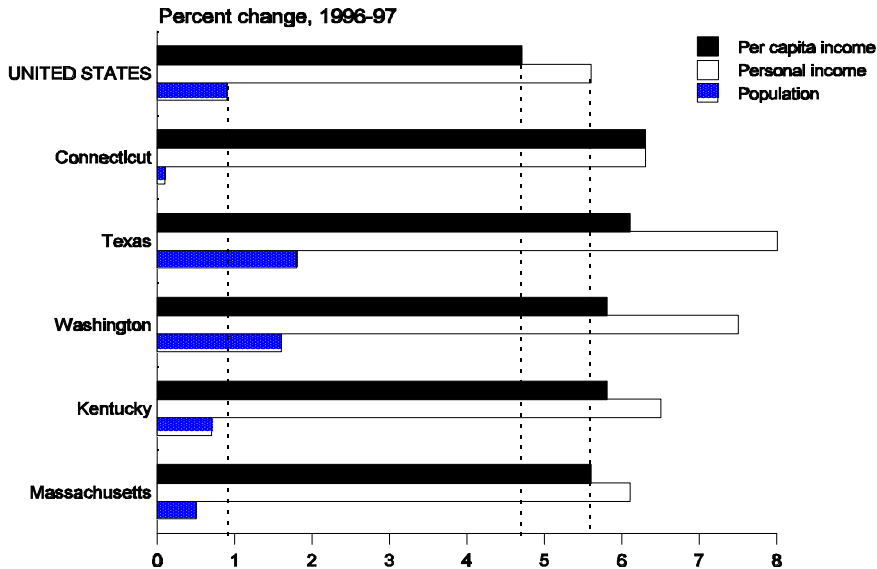
The estimates of per capita income and personal income released today are based on more complete source data than were available for the preliminary estimates issued on April 27, 1998. In the preliminary estimates, the 1997 growth rate of U.S. per capita income was 4.8 percent (see "Revisions" on page 5).

**State per capita income growth in 1997**

Fastest growing states.--- In 1997, the five states with the fastest growth in per capita income were Connecticut (6.3 percent), Texas (6.1 percent), Washington (5.8 percent), Kentucky (5.8 percent), and Massachusetts (5.6 percent). Of these states, Connecticut, Massachusetts, and Washington had per capita incomes that were above the U.S. average of \$25,298.

In all five fastest growing states, growth rates in personal income were above the U.S. average of 5.6 percent, and, except in Texas and Washington, growth rates in population were below the U.S. average of 0.9 percent (see chart on page 2).

### Fastest growing states



In all five fastest growing states, earnings was the major contributor to personal income growth (see table 5, contribution to percent change in personal income, and "Definitions" on page 6). Other components contributing substantially to personal income growth were dividends, interest, and rent in Washington and transfer payments in Kentucky.

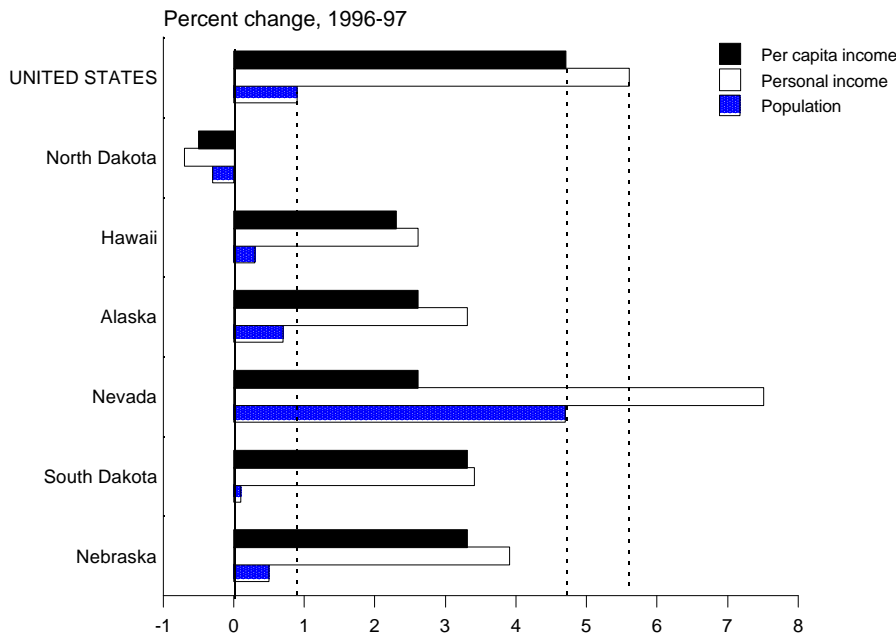
By industry, in all five states, earnings in services and manufacturing were the largest contributors to growth in earnings by place of work.

In addition, earnings grew rapidly in finance, insurance, and real estate and wholesale trade in Connecticut; in wholesale trade and farms in Texas; in transportation and public utilities in Washington; in farms and construction in Kentucky; and in farms and finance, insurance, and real estate in Massachusetts (see table 6).

Slowest growing states.—In 1997, the six states with the slowest growth in per capita income were North Dakota (-0.5 percent), Hawaii (2.3 percent), Alaska (2.6 percent), Nevada (2.6 percent), South Dakota (3.3 percent), and Nebraska (3.3 percent). Of these states, North Dakota, Alaska, South Dakota, and Nebraska had per capita incomes that were below the U.S. average of \$25,298.

In the six slowest growing states except Nevada, growth in personal income was less than the U.S. average, and population growth was less than the U.S. average. In Nevada, the slow growth in per capita income reflected rapid growth in population that largely offset above-average growth in personal income.

**Slowest growing states**



In these states except for Nevada, personal income growth was dampened by a decline or slow growth in earnings. By industry, large declines in farm earnings contributed to slow growth in earnings in North Dakota, South Dakota, and Nebraska. Earnings growth was dampened by a decline in construction in Hawaii and by declines in mining and manufacturing in Alaska.

**Ranking of state per capita income**

In 1997, per capita income ranged from \$35,954 in Connecticut to \$18,087 in Mississippi (see map).

The ranking of states by per capita income changed little between 1996 and 1997 (see table 4). Only three states – Washington, Kansas, and Kentucky – increased more than two positions in rank; three other states – North Dakota, Hawaii, and Nebraska – declined more than two positions in rank.

The 10 states with the highest per capita income in 1997 were:

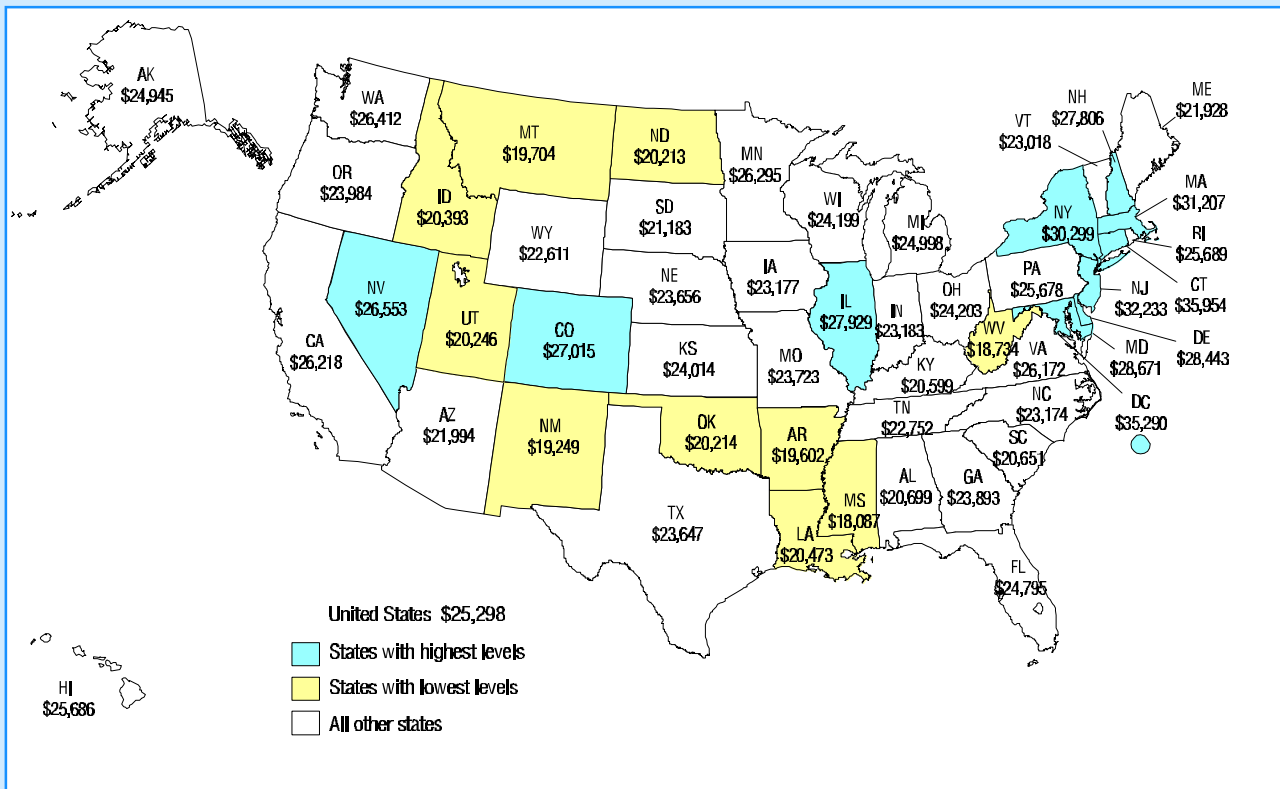
	Dollars		Rank	
	1996	1997	1996	1997
Connecticut	33,835	35,954	1	1
New Jersey	30,901	32,233	2	2
Massachusetts	29,559	31,207	3	3
New York	29,055	30,299	4	4
Maryland	27,305	28,671	5	5
Delaware	27,291	28,443	6	6
Illinois	26,603	27,929	7	7
New Hampshire	26,490	27,806	8	8
Colorado	25,618	27,015	10	9
Nevada	25,876	26,553	9	10

The 10 states with the lowest per capita income in 1997 were:

	Dollars		Rank	
	1996	1997	1996	1997
Louisiana	19,608	20,473	42	41
Idaho	19,729	20,393	41	42
Utah	19,244	20,246	45	43
Oklahoma	19,363	20,214	44	44
North Dakota	20,308	20,213	38	45
Montana	18,886	19,704	46	46
Arkansas	18,802	19,602	47	47
New Mexico	18,599	19,249	48	48
West Virginia	18,120	18,734	49	49
Mississippi	17,402	18,087	50	50

Except for Utah, the states with the lowest per capita incomes in 1997 had growth rates that were below the U.S. average of 4.7 percent.

### Per Capita Personal Income, 1997



U.S. Department of Commerce, Bureau of Economic Analysis

## **Personal income in 1997**

U.S. personal income increased \$362.0 billion, or 5.6 percent in 1997, compared with 5.8 percent in 1996 (see tables 2 and 5). The largest increases were in the Southeast and Far West regions; although both of these regions experienced slowdowns in growth rates, they still accounted for 22 percent and 19 percent of the growth in U.S. personal income, respectively. The increases in personal income in the Southeast were largely accounted for by Florida, North Carolina, Georgia, and Virginia, and in the Far West by California.

Among states, California accounted for the largest share of the increase in U.S. personal income in 1997 (13 percent). California has accounted for the largest share of the increase in U.S. personal income since 1995. Texas accounted for a 10-percent share of the increase in U.S. personal income in 1997, up from an 8-percent share in 1993. Texas has accounted for the second largest share of the increase in U.S. personal income since 1993.

## **Revisions**

The personal income estimates for the nation and states have been revised for 1982-97 to incorporate the annual revision of the national income and product accounts (NIPA's) that was released on July 31, 1998 and newly available state source data. The NIPA's and state personal income are revised to incorporate new source data that are more complete, more detailed, and otherwise more current than data previously available.

As part of the annual revision to the NIPA's, personal dividend income was redefined to exclude payments that reflect identifiable capital gains distributions; previously, personal dividend income included capital gains distributions of regulated investment companies -- that is, mutual funds. The redefinition results in a reduction in dividends and personal income, and all series affected by the redefinition were revised back to 1982. A more detailed discussion of the definitional change and of other NIPA revisions to the national estimates of personal income, which are confined to 1995-97, is available in the "Annual Revision of the National Income and Product Accounts" article in the August 1998 Survey of Current Business. A discussion of the newly available state source data will appear in the October 1998 Survey.

For the nation, personal income was revised down for 1995-97: 1.3 percent in 1995, 1.1 percent in 1996, and 1.2 percent in 1997. The growth rates in personal income were revised from 6.3 percent to 5.6 percent in 1995, from 5.6 percent to 5.8 percent in 1996, and from 5.7 percent to 5.6 percent in 1997. The revisions of personal income subsequently affected the per capita income estimates for which the U.S. growth rates were revised from 5.3 percent to 4.6 percent in 1995, from 4.6 percent to 4.8 percent in 1996, and from 4.8 percent to 4.7 percent in 1997.

All but two states -- Iowa and Arkansas -- had downward revisions to the level of personal income in 1997. Michigan had the largest downward revision (down 2.2 percent), reflecting the incorporation of new source data in earnings as well as the revisions to dividends. Of the two states that had upward revisions in 1997 -- Iowa (up 0.3 percent) and Arkansas (up 0.1 percent) -- the upward revisions to farm proprietors' income more than offset the downward revisions to dividends.

## Definitions

Personal income is the income received by all persons from participation in production, from government and business transfer payments, and from government interest. Personal income is the sum of net earnings by place of residence, rental income of persons, personal dividend income, personal interest income, and transfer payments. Net earnings by place of residence is earnings by place of work – the sum of wage and salary disbursements (payrolls), other labor income, and proprietors' income -- less personal contributions for social insurance, plus an adjustment to convert earnings by place of work to a place-of-residence basis. Personal income is measured before the deduction of personal income taxes and other personal taxes and is reported in current dollars (no adjustment is made for price changes).

The personal income level for the United States in this release is derived as the sum of the state estimates; it differs from the NIPA estimate of personal income because, by definition, it omits the earnings of federal civilian and military personnel stationed abroad and of U.S. residents employed abroad temporarily by private U.S. firms. It can also differ from the NIPA estimate because of different revision schedules.

Per capita personal income is the annual total personal income of residents divided by resident population as of July 1.

\* \* \*

BEA's major national, regional, international, and industry estimates; the Survey of Current Business; and BEA news releases are available on BEA's web site:

*<http://www.bea.doc.gov>*

STAT-USA maintains an electronic bulletin board (EBB) and an Internet site, which contain BEA estimates, BEA news releases, and the Survey of Current Business. To subscribe to STAT-USA's World Wide Web system, go to: *<http://www.stat-usa.gov>*. Subscriptions for single-user unlimited access to STAT-USA's Internet information are \$50.00 for 3 months or \$150.00 for 1 year. For further information, call (202) 482-1986.

Summary BEA estimates are available on recorded messages at the time of public release at the following telephone numbers:

(202) 606-5306 Gross domestic product  
606-5303 Personal income and outlays  
606-5362 Summary of international transactions

Most of BEA's estimates and analyses appear in the Survey of Current Business, BEA's monthly journal. The printed Survey of Current Business is available from the Superintendent of Documents, U.S. Government Printing Office, Washington D.C. 20402. First class mail: Annual subscription \$88.00 domestic. Second class mail: Annual subscription \$39.00 domestic, \$48.75 foreign; single issue \$14.00 domestic, \$17.50 foreign.

\* \* \*

Next state personal income release -- October 27, at 9:00 AM EDT for  
State Personal Income, Second Quarter 1998

Table 1.—Per Capita Personal Income, by State and Region, 1993-97

[Dollars]

	1993 <sup>r</sup>	1994 <sup>r</sup>	1995 <sup>r</sup>	1996 <sup>r</sup>	1997 <sup>r</sup>	Percent change			
						1993-94	1994-95	1995-96	1996-97
<b>United States</b> .....	<b>21,220</b>	<b>22,056</b>	<b>23,063</b>	<b>24,169</b>	<b>25,298</b>	<b>3.9</b>	<b>4.6</b>	<b>4.8</b>	<b>4.7</b>
<b>New England</b>									
Connecticut .....	29,201	30,269	32,073	33,835	35,954	3.7	6.0	5.5	6.3
Maine .....	18,456	19,177	19,970	20,941	21,928	3.9	4.1	4.9	4.7
Massachusetts .....	25,335	26,426	28,073	29,559	31,207	4.3	6.2	5.3	5.6
New Hampshire .....	22,719	24,110	25,341	26,490	27,806	6.1	5.1	4.5	5.0
Rhode Island .....	21,725	22,304	23,480	24,344	25,689	2.7	5.3	3.7	5.5
Vermont .....	19,388	20,185	21,237	22,184	23,018	4.1	5.2	4.5	3.8
<b>Mideast</b>									
Delaware .....	23,605	24,549	25,666	27,291	28,443	4.0	4.6	6.3	4.2
District of Columbia .....	29,921	31,205	32,197	33,830	35,290	4.3	3.2	5.1	4.3
Maryland .....	24,275	25,313	26,115	27,305	28,671	4.3	3.2	4.6	5.0
New Jersey .....	27,474	28,351	29,581	30,901	32,233	3.2	4.3	4.5	4.3
New York .....	25,373	26,239	27,578	29,055	30,299	3.4	5.1	5.4	4.3
Pennsylvania .....	21,635	22,336	23,270	24,530	25,678	3.2	4.2	5.4	4.7
<b>Great Lakes</b>									
Illinois .....	22,979	24,072	25,297	26,603	27,929	4.8	5.1	5.2	5.0
Indiana .....	19,651	20,731	21,442	22,251	23,183	5.5	3.4	3.8	4.2
Michigan .....	20,937	22,353	23,434	24,009	24,998	6.8	4.8	2.5	4.1
Ohio .....	20,237	21,246	22,233	23,078	24,203	5.0	4.6	3.8	4.9
Wisconsin .....	20,078	21,096	22,084	23,132	24,199	5.1	4.7	4.7	4.6
<b>Plains</b>									
Iowa .....	18,465	19,965	20,462	22,078	23,177	8.1	2.5	7.9	5.0
Kansas .....	20,075	20,672	21,547	22,796	24,014	3.0	4.2	5.8	5.3
Minnesota .....	21,486	22,794	23,759	25,260	26,295	6.1	4.2	6.3	4.1
Missouri .....	19,631	20,615	21,610	22,615	23,723	5.0	4.8	4.7	4.9
Nebraska .....	19,710	20,356	21,078	22,891	23,656	3.3	3.5	8.6	3.3
North Dakota .....	17,043	18,157	18,287	20,308	20,213	6.5	.7	11.1	-5
South Dakota .....	17,598	18,558	18,782	20,503	21,183	5.5	1.2	9.2	3.3
<b>Southeast</b>									
Alabama .....	17,395	18,193	19,086	19,864	20,699	4.6	4.9	4.1	4.2
Arkansas .....	16,380	17,086	17,935	18,802	19,602	4.3	5.0	4.8	4.3
Florida .....	21,081	21,758	22,665	23,833	24,795	3.2	4.2	5.2	4.0
Georgia .....	19,665	20,623	21,689	22,906	23,893	4.9	5.2	5.6	4.3
Kentucky .....	17,212	17,872	18,609	19,470	20,599	3.8	4.1	4.6	5.8
Louisiana .....	17,135	18,085	18,828	19,608	20,473	5.5	4.1	4.1	4.4
Mississippi .....	14,903	15,887	16,585	17,402	18,087	6.6	4.4	4.9	3.9
North Carolina .....	19,140	19,919	20,994	22,054	23,174	4.1	5.4	5.0	5.1
South Carolina .....	17,139	17,979	18,871	19,751	20,651	4.9	5.0	4.7	4.6
Tennessee .....	19,139	20,088	21,118	21,808	22,752	5.0	5.1	3.3	4.3
Virginia .....	22,139	23,034	24,000	24,992	26,172	4.0	4.2	4.1	4.7
West Virginia .....	16,307	16,946	17,446	18,120	18,734	3.9	3.0	3.9	3.4
<b>Southwest</b>									
Arizona .....	18,267	19,122	20,068	21,057	21,994	4.7	4.9	4.9	4.4
New Mexico .....	16,545	17,127	18,003	18,599	19,249	3.5	5.1	3.3	3.5
Oklahoma .....	17,422	17,984	18,560	19,363	20,214	3.2	3.2	4.3	4.4
Texas .....	19,578	20,271	21,279	22,285	23,647	3.5	5.0	4.7	6.1
<b>Rocky Mountain</b>									
Colorado .....	22,109	23,001	24,290	25,618	27,015	4.0	5.6	5.5	5.5
Idaho .....	17,686	18,168	18,947	19,729	20,393	2.7	4.3	4.1	3.4
Montana .....	17,572	17,589	18,310	18,886	19,704	.1	4.1	3.1	4.3
Utah .....	16,336	17,122	18,182	19,244	20,246	4.8	6.2	5.8	5.2
Wyoming .....	19,535	19,859	20,695	21,532	22,611	1.7	4.2	4.0	5.0
<b>Far West</b>									
Alaska .....	22,715	23,412	23,965	24,318	24,945	3.1	2.4	1.5	2.6
California .....	22,388	22,899	23,901	25,050	26,218	2.3	4.4	4.8	4.7
Hawaii .....	23,708	24,161	24,883	25,105	25,686	1.9	3.0	.9	2.3
Nevada .....	22,384	23,377	24,525	25,876	26,553	4.4	4.9	5.5	2.6
Oregon .....	19,512	20,497	21,579	22,852	23,984	5.0	5.3	5.9	5.0
Washington .....	22,018	22,673	23,664	24,964	26,412	3.0	4.4	5.5	5.8
<b>BEA regions</b>									
New England .....	24,896	25,918	27,426	28,828	30,440	4.1	5.8	5.1	5.6
Mideast .....	24,640	25,489	26,630	27,993	29,245	3.4	4.5	5.1	4.5
Great Lakes .....	21,040	22,173	23,208	24,136	25,253	5.4	4.7	4.0	4.6
Plains .....	19,810	20,876	21,686	23,083	24,100	5.4	3.9	6.4	4.4
Southeast .....	19,078	19,898	20,817	21,800	22,776	4.3	4.6	4.7	4.5
Southwest .....	18,942	19,637	20,578	21,535	22,734	3.7	4.8	4.7	5.6
Rocky Mountain .....	19,470	20,151	21,227	22,310	23,436	3.5	5.3	5.1	5.0
Far West .....	22,178	22,757	23,753	24,901	26,061	2.6	4.4	4.8	4.7

<sup>r</sup> Revised.

Source: Bureau of Economic Analysis, U.S. Department of Commerce.

**Table 2.—Personal Income, by State and Region, 1993-97**

[Millions of dollars]

	1993 <sup>r</sup>	1994 <sup>r</sup>	1995 <sup>r</sup>	1996 <sup>r</sup>	1997 <sup>r</sup>	Percent change <sup>1</sup>			
						1993-94	1994-95	1995-96	1996-97
<b>United States</b> .....	<b>5,469,485</b>	<b>5,741,050</b>	<b>6,060,138</b>	<b>6,408,990</b>	<b>6,770,709</b>	<b>5.0</b>	<b>5.6</b>	<b>5.8</b>	<b>5.6</b>
<b>New England</b>									
Connecticut .....	95,588	98,966	104,777	110,550	117,564	3.5	5.9	5.5	6.3
Maine .....	22,823	23,698	24,646	25,936	27,236	3.8	4.0	5.2	5.0
Massachusetts .....	152,204	159,317	170,141	179,876	190,908	4.7	6.8	5.7	6.1
New Hampshire .....	25,484	27,337	29,051	30,734	32,608	7.3	6.3	5.8	6.1
Rhode Island .....	21,688	22,170	23,242	24,059	25,366	2.2	4.8	3.5	5.4
Vermont .....	11,128	11,688	12,378	13,010	13,557	5.0	5.9	5.1	4.2
<b>Mideast</b>									
Delaware .....	16,482	17,344	18,369	19,744	20,808	5.2	5.9	7.5	5.4
District of Columbia .....	17,264	17,659	17,783	18,244	18,667	2.3	.7	2.6	2.3
Maryland .....	120,033	126,277	131,290	138,173	146,060	5.2	4.0	5.2	5.7
New Jersey .....	216,183	224,290	235,337	247,267	259,567	3.8	4.9	5.1	5.0
New York .....	460,249	476,331	500,433	526,883	549,531	3.5	5.1	5.3	4.3
Pennsylvania .....	260,109	269,002	280,305	295,349	308,640	3.4	4.2	5.4	4.5
<b>Great Lakes</b>									
Illinois .....	268,281	282,546	298,369	315,117	332,241	5.3	5.6	5.6	5.4
Indiana .....	112,016	119,029	124,104	129,682	135,945	6.3	4.3	4.5	4.8
Michigan .....	199,411	214,135	226,261	233,628	244,329	7.4	5.7	3.3	4.6
Ohio .....	223,792	235,724	247,517	257,610	270,741	5.3	5.0	4.1	5.1
Wisconsin .....	101,159	107,063	112,917	119,042	125,100	5.8	5.5	5.4	5.1
<b>Plains</b>									
Iowa .....	52,073	56,485	58,123	62,880	66,110	8.5	2.9	8.2	5.1
Kansas .....	50,883	52,794	55,368	58,793	62,312	3.8	4.9	6.2	6.0
Minnesota .....	97,202	104,110	109,451	117,421	123,207	7.1	5.1	7.3	4.9
Missouri .....	102,826	108,872	115,067	121,299	128,151	5.9	5.7	5.4	5.6
Nebraska .....	31,785	33,029	34,489	37,741	39,195	3.9	4.4	9.4	3.9
North Dakota .....	10,860	11,612	11,728	13,051	12,954	6.9	1.0	11.3	-7
South Dakota .....	12,717	13,541	13,803	15,122	15,632	6.5	1.9	9.6	3.4
<b>Southeast</b>									
Alabama .....	72,930	76,999	81,346	85,160	89,403	5.6	5.6	4.7	5.0
Arkansas .....	39,704	41,881	44,494	47,122	49,453	5.5	6.2	5.9	4.9
Florida .....	289,052	303,647	321,415	343,652	363,347	5.0	5.9	6.9	5.7
Georgia .....	135,613	145,373	155,990	167,996	178,870	7.2	7.3	7.7	6.5
Kentucky .....	65,279	68,343	71,761	75,584	80,503	4.7	5.0	5.3	6.5
Louisiana .....	73,424	77,892	81,498	85,117	89,094	6.1	4.6	4.4	4.7
Mississippi .....	39,272	42,308	44,623	47,173	49,386	7.7	5.5	5.7	4.7
North Carolina .....	132,981	140,667	150,880	161,194	172,073	5.8	7.3	6.8	6.7
South Carolina .....	62,123	65,688	69,508	73,407	77,650	5.7	5.8	5.6	5.8
Tennessee .....	97,273	103,614	110,562	115,744	122,136	6.5	6.7	4.7	5.5
Virginia .....	143,137	150,591	158,426	166,599	176,245	5.2	5.2	5.2	5.8
West Virginia .....	29,620	30,822	31,785	32,986	34,017	4.1	3.1	3.8	3.1
<b>Southwest</b>									
Arizona .....	72,962	79,335	86,455	93,372	100,182	8.7	9.0	8.0	7.3
New Mexico .....	26,749	28,362	30,358	31,827	33,297	6.0	7.0	4.8	4.6
Oklahoma .....	56,253	58,416	60,718	63,809	67,052	3.8	3.9	5.1	5.1
Texas .....	353,092	372,673	398,718	425,443	459,688	5.5	7.0	6.7	8.0
<b>Rocky Mountain</b>									
Colorado .....	78,783	84,115	90,884	97,764	105,158	6.8	8.0	7.6	7.6
Idaho .....	19,474	20,628	22,071	23,430	24,681	5.9	7.0	6.2	5.3
Montana .....	14,761	15,038	15,906	16,557	17,316	1.9	5.8	4.1	4.6
Utah .....	30,624	33,021	35,897	38,825	41,689	7.8	8.7	8.2	7.4
Wyoming .....	9,163	9,434	9,903	10,336	10,848	3.0	5.0	4.4	5.0
<b>Far West</b>									
Alaska .....	13,556	14,065	14,419	14,711	15,199	3.8	2.5	2.0	3.3
California .....	698,130	718,321	754,269	798,020	846,017	2.9	5.0	5.8	6.0
Hawaii .....	27,511	28,331	29,333	29,698	30,479	3.0	3.5	1.2	2.6
Nevada .....	30,945	34,105	37,512	41,423	44,524	10.2	10.0	10.4	7.5
Oregon .....	59,234	63,309	67,822	73,044	77,791	6.9	7.1	7.7	6.5
Washington .....	115,597	121,058	128,633	137,788	148,182	4.7	6.3	7.1	7.5
<b>BEA regions</b>									
New England .....	328,914	343,175	364,235	384,165	407,240	4.3	6.1	5.5	6.0
Mideast .....	1,090,321	1,130,903	1,183,517	1,245,659	1,303,273	3.7	4.7	5.3	4.6
Great Lakes .....	904,660	958,496	1,009,168	1,055,079	1,108,356	6.0	5.3	4.5	5.0
Plains .....	358,347	380,442	398,029	426,307	447,560	6.2	4.6	7.1	5.0
Southeast .....	1,180,409	1,247,824	1,322,289	1,401,733	1,482,178	5.7	6.0	6.0	5.7
Southwest .....	509,054	538,786	576,249	614,451	660,218	5.8	7.0	6.6	7.4
Rocky Mountain .....	152,805	162,235	174,662	186,911	199,692	6.2	7.7	7.0	6.8
Far West .....	944,975	979,189	1,031,987	1,094,684	1,162,192	3.6	5.4	6.1	6.2

<sup>r</sup> Revised.

<sup>1</sup> Percent changes are calculated from unrounded data.

Source: Bureau of Economic Analysis, U.S. Department of Commerce.



**Table 3.—Population, as of July 1, by State and Region, 1993-97**

[Thousands of persons]

	1993 <sup>r</sup>	1994 <sup>r</sup>	1995 <sup>r</sup>	1996 <sup>r</sup>	1997 <sup>r</sup>	Percent change <sup>1</sup>			
						1993-94	1994-95	1995-96	1996-97
<b>United States</b> .....	<b>257,753</b>	<b>260,292</b>	<b>262,761</b>	<b>265,179</b>	<b>267,636</b>	<b>1.0</b>	<b>0.9</b>	<b>0.9</b>	<b>0.9</b>
<b>New England</b>									
Connecticut .....	3,273	3,270	3,267	3,267	3,270	-.1	-.1	0	.1
Maine .....	1,237	1,236	1,234	1,239	1,242	-.1	-.1	.4	.3
Massachusetts .....	6,008	6,029	6,061	6,085	6,118	.4	.5	.4	.5
New Hampshire .....	1,122	1,134	1,146	1,160	1,173	1.1	1.1	1.2	1.1
Rhode Island .....	998	994	990	988	987	-.4	-.4	-.2	-.1
Vermont .....	574	579	583	586	589	.9	.7	.6	.4
<b>Mideast</b>									
Delaware .....	698	706	716	723	732	1.2	1.3	1.1	1.1
District of Columbia .....	577	566	552	539	529	-1.9	-2.4	-2.4	-1.9
Maryland .....	4,945	4,989	5,027	5,060	5,094	.9	.8	.7	.7
New Jersey .....	7,869	7,911	7,956	8,002	8,053	.5	.6	.6	.6
New York .....	18,139	18,154	18,146	18,134	18,137	.1	0	-.1	0
Pennsylvania .....	12,022	12,043	12,046	12,040	12,020	.2	0	0	-.2
<b>Great Lakes</b>									
Illinois .....	11,675	11,737	11,795	11,845	11,896	.5	.5	.4	.4
Indiana .....	5,700	5,742	5,788	5,828	5,864	.7	.8	.7	.6
Michigan .....	9,524	9,580	9,655	9,731	9,774	.6	.8	.8	.4
Ohio .....	11,058	11,095	11,133	11,163	11,186	.3	.3	.3	.2
Wisconsin .....	5,038	5,075	5,113	5,146	5,170	.7	.8	.6	.5
<b>Plains</b>									
Iowa .....	2,820	2,829	2,841	2,848	2,852	.3	.4	.3	.2
Kansas .....	2,535	2,554	2,570	2,579	2,595	.8	.6	.4	.6
Minnesota .....	4,524	4,567	4,607	4,649	4,686	1.0	.9	.9	.8
Missouri .....	5,238	5,281	5,325	5,364	5,402	.8	.8	.7	.7
Nebraska .....	1,613	1,623	1,636	1,649	1,657	.6	.8	.8	.5
North Dakota .....	637	640	641	643	641	.4	.3	.2	-.3
South Dakota .....	723	730	735	738	738	1.0	.7	.4	.1
<b>Southeast</b>									
Alabama .....	4,193	4,232	4,262	4,287	4,319	.9	.7	.6	.7
Arkansas .....	2,424	2,451	2,481	2,506	2,523	1.1	1.2	1.0	.7
Florida .....	13,712	13,956	14,181	14,419	14,654	1.8	1.6	1.7	1.6
Georgia .....	6,896	7,049	7,192	7,334	7,486	2.2	2.0	2.0	2.1
Kentucky .....	3,793	3,824	3,856	3,882	3,908	.8	.8	.7	.7
Louisiana .....	4,285	4,307	4,329	4,341	4,352	.5	.5	.3	.3
Mississippi .....	2,635	2,663	2,691	2,711	2,731	1.1	1.0	.8	.7
North Carolina .....	6,948	7,062	7,187	7,309	7,425	1.6	1.8	1.7	1.6
South Carolina .....	3,625	3,654	3,683	3,717	3,760	.8	.8	.9	1.2
Tennessee .....	5,083	5,158	5,235	5,307	5,368	1.5	1.5	1.4	1.1
Virginia .....	6,465	6,538	6,601	6,666	6,734	1.1	1.0	1.0	1.0
West Virginia .....	1,816	1,819	1,822	1,820	1,816	.1	.2	-.1	-.3
<b>Southwest</b>									
Arizona .....	3,994	4,149	4,308	4,434	4,555	3.9	3.8	2.9	2.7
New Mexico .....	1,617	1,656	1,686	1,711	1,730	2.4	1.8	1.5	1.1
Oklahoma .....	3,229	3,248	3,271	3,295	3,317	.6	.7	.7	.7
Texas .....	18,035	18,385	18,738	19,091	19,439	1.9	1.9	1.9	1.8
<b>Rocky Mountain</b>									
Colorado .....	3,563	3,657	3,742	3,816	3,893	2.6	2.3	2.0	2.0
Idaho .....	1,101	1,135	1,165	1,188	1,210	3.1	2.6	1.9	1.9
Montana .....	840	855	869	877	879	1.8	1.6	.9	.2
Utah .....	1,875	1,929	1,974	2,018	2,059	2.9	2.4	2.2	2.1
Wyoming .....	469	475	479	480	480	1.3	.7	.3	-.1
<b>Far West</b>									
Alaska .....	597	601	602	605	609	.7	.1	.6	.7
California .....	31,183	31,369	31,558	31,858	32,268	.6	.6	.9	1.3
Hawaii .....	1,160	1,173	1,179	1,183	1,187	1.1	.5	.3	.3
Nevada .....	1,382	1,459	1,530	1,601	1,677	5.5	4.8	4.7	4.7
Oregon .....	3,036	3,089	3,143	3,196	3,243	1.7	1.8	1.7	1.5
Washington .....	5,250	5,339	5,436	5,520	5,610	1.7	1.8	1.5	1.6
<b>BEA regions</b>									
New England .....	13,211	13,241	13,281	13,326	13,379	.2	.3	.3	.4
Mideast .....	44,250	44,369	44,443	44,499	44,565	.3	.2	.1	.1
Great Lakes .....	42,996	43,229	43,484	43,713	43,890	.5	.6	.5	.4
Plains .....	18,089	18,223	18,354	18,468	18,571	.7	.7	.6	.6
Southeast .....	61,874	62,712	63,520	64,300	65,076	1.4	1.3	1.2	1.2
Southwest .....	26,875	27,438	28,003	28,532	29,041	2.1	2.1	1.9	1.8
Rocky Mountain .....	7,848	8,051	8,228	8,378	8,521	2.6	2.2	1.8	1.7
Far West .....	42,609	43,029	43,447	43,962	44,595	1.0	1.0	1.2	1.4

<sup>r</sup> Revised

<sup>1</sup> Percent changes are calculated from unrounded data.

Source: Bureau of the Census, U.S. Department of Commerce.

Table 4.—Per Capita Personal Income, by State and Region, 1996-97

	Dollars		Rank in United States		Percent of national average		Percent change, 1996-97
	1996 <sup>r</sup>	1997 <sup>r</sup>	1996	1997	1996	1997	
<b>United States</b> .....	<b>24,169</b>	<b>25,298</b>			<b>100</b>	<b>100</b>	<b>4.7</b>
Connecticut .....	33,835	35,954	1	1	140	142	6.3
District of Columbia .....	33,830	35,290	(1)	(1)	140	139	4.3
New Jersey .....	30,901	32,233	2	2	128	127	4.3
Massachusetts .....	29,559	31,207	3	3	122	123	5.6
New York .....	29,055	30,299	4	4	120	120	4.3
Maryland .....	27,305	28,671	5	5	113	113	5.0
Delaware .....	27,291	28,443	6	6	113	112	4.2
Illinois .....	26,603	27,929	7	7	110	110	5.0
New Hampshire .....	26,490	27,806	8	8	110	110	5.0
Colorado .....	25,618	27,015	10	9	106	107	5.5
Nevada .....	25,876	26,553	9	10	107	105	2.6
Washington .....	24,964	26,412	15	11	103	104	5.8
Minnesota .....	25,260	26,295	11	12	105	104	4.1
California .....	25,050	26,218	13	13	104	104	4.7
Virginia .....	24,992	26,172	14	14	103	103	4.7
Rhode Island .....	24,344	25,689	17	15	101	102	5.5
Hawaii .....	25,105	25,686	12	16	104	102	2.3
Pennsylvania .....	24,530	25,678	16	17	101	102	4.7
Michigan .....	24,009	24,998	19	18	99	99	4.1
Alaska .....	24,318	24,945	18	19	101	99	2.6
Florida .....	23,833	24,795	20	20	99	98	4.0
Ohio .....	23,078	24,203	22	21	95	96	4.9
Wisconsin .....	23,132	24,199	21	22	96	96	4.6
Kansas .....	22,796	24,014	26	23	94	95	5.3
Oregon .....	22,852	23,984	25	24	95	95	5.0
Georgia .....	22,906	23,893	23	25	95	94	4.3
Missouri .....	22,615	23,723	27	26	94	94	4.9
Nebraska .....	22,891	23,656	24	27	95	94	3.3
Texas .....	22,285	23,647	28	28	92	93	6.1
Indiana .....	22,251	23,183	29	29	92	92	4.2
Iowa .....	22,078	23,177	31	30	91	92	5.0
North Carolina .....	22,054	23,174	32	31	91	92	5.1
Vermont .....	22,184	23,018	30	32	92	91	3.8
Tennessee .....	21,808	22,752	33	33	90	90	4.3
Wyoming .....	21,532	22,611	34	34	89	89	5.0
Arizona .....	21,057	21,994	35	35	87	87	4.4
Maine .....	20,941	21,928	36	36	87	87	4.7
South Dakota .....	20,503	21,183	37	37	85	84	3.3
Alabama .....	19,864	20,699	39	38	82	82	4.2
South Carolina .....	19,751	20,651	40	39	82	82	4.6
Kentucky .....	19,470	20,599	43	40	81	81	5.8
Louisiana .....	19,608	20,473	42	41	81	81	4.4
Idaho .....	19,729	20,393	41	42	82	81	3.4
Utah .....	19,244	20,246	45	43	80	80	5.2
Oklahoma .....	19,363	20,214	44	44	80	80	4.4
North Dakota .....	20,308	20,213	38	45	84	80	-5
Montana .....	18,886	19,704	46	46	78	78	4.3
Arkansas .....	18,802	19,602	47	47	78	77	4.3
New Mexico .....	18,599	19,249	48	48	77	76	3.5
West Virginia .....	18,120	18,734	49	49	75	74	3.4
Mississippi .....	17,402	18,087	50	50	72	71	3.9
<b>BEA regions</b> .....							
New England .....	28,828	30,440	1	1	119	120	5.6
Mideast .....	27,993	29,245	2	2	116	116	4.5
Far West .....	24,901	26,061	3	3	103	103	4.7
Great Lakes .....	24,136	25,253	4	4	100	100	4.6
Plains .....	23,083	24,100	5	5	96	95	4.4
Rocky Mountain .....	22,310	23,436	6	6	92	93	5.0
Southeast .....	21,800	22,776	7	7	90	90	4.5
Southwest .....	21,535	22,734	8	8	89	90	5.6

<sup>r</sup> Revised.  
1. Not ranked.

Note: States and regions are listed based on their rank in per capita personal income in 1997.  
Source: Bureau of Economic Analysis, U.S. Department of Commerce.

Table 5.—Personal Income by Component, by State and Region, 1996-97

	Percent change <sup>1</sup>				Percent change in personal income <sup>1</sup>	Contribution to percent change in personal income (percentage points)			Dollar change (millions)			
	Personal income	Net earnings by place of residence <sup>2</sup>	Dividends, interest, and rent	Transfer payments		Net earnings by place of residence <sup>2</sup>	Dividends, interest, and rent	Transfer payments	Personal income	Net earnings by place of residence <sup>2</sup>	Dividends, interest, and rent	Transfer payments
<b>United States</b> .....	<b>5.6</b>	<b>6.4</b>	<b>4.3</b>	<b>4.0</b>	<b>5.6</b>	<b>4.2</b>	<b>0.7</b>	<b>0.7</b>	<b>361,719</b>	<b>271,267</b>	<b>47,984</b>	<b>42,468</b>
<b>New England</b>												
Connecticut .....	6.3	7.4	4.2	4.4	6.3	5.0	.8	.6	7,015	5,473	893	648
Maine .....	5.0	5.4	3.4	5.2	5.0	3.3	.6	1.1	1,300	868	154	277
Massachusetts .....	6.1	7.0	4.1	4.9	6.1	4.6	.8	.8	11,032	8,324	1,354	1,354
New Hampshire .....	6.1	7.4	4.0	2.4	6.1	5.0	.7	.3	1,874	1,546	230	98
Rhode Island .....	5.4	5.9	2.6	6.4	5.4	3.7	.5	1.3	1,307	886	111	311
Vermont .....	4.2	4.6	3.3	3.8	4.2	2.9	.7	.6	547	382	87	79
<b>Mideast</b>												
Delaware .....	5.4	6.4	4.4	2.1	5.4	4.3	.8	.3	1,064	841	164	59
District of Columbia .....	2.3	1.8	.7	5.2	2.3	1.1	.1	1.1	423	206	20	197
Maryland .....	5.7	6.1	3.7	6.3	5.7	4.1	.7	.9	7,887	5,716	909	1,263
New Jersey .....	5.0	5.8	3.3	3.3	5.0	3.9	.6	.5	12,300	9,577	1,598	1,125
New York .....	4.3	5.3	3.2	2.1	4.3	3.3	.6	.4	22,649	17,586	2,945	2,117
Pennsylvania .....	4.5	5.1	2.9	3.9	4.5	3.2	.5	.7	13,291	9,564	1,521	2,206
<b>Great Lakes</b>												
Illinois .....	5.4	6.3	3.8	3.4	5.4	4.3	.7	.5	17,124	13,394	2,209	1,522
Indiana .....	4.8	5.4	3.6	3.3	4.8	3.8	.6	.5	6,263	4,890	723	650
Michigan .....	4.6	5.3	1.7	4.7	4.6	3.5	.3	.7	10,701	8,288	698	1,715
Ohio .....	5.1	5.9	3.5	3.7	5.1	3.9	.6	.7	13,131	9,988	1,445	1,699
Wisconsin .....	5.1	5.8	3.5	3.6	5.1	3.9	.6	.6	6,058	4,668	731	659
<b>Plains</b>												
Iowa .....	5.1	5.4	6.1	3.1	5.1	3.6	1.1	.5	3,230	2,241	680	308
Kansas .....	6.0	6.7	5.5	3.3	6.0	4.5	1.0	.5	3,519	2,629	596	293
Minnesota .....	4.9	5.4	4.4	3.0	4.9	3.8	.7	.4	5,785	4,432	866	488
Missouri .....	5.6	6.3	3.9	5.0	5.6	4.1	.7	.9	6,852	4,940	867	1,044
Nebraska .....	3.9	2.7	7.7	4.7	3.9	1.8	1.3	.7	1,454	689	503	262
North Dakota .....	-7	-3.3	2.6	5.2	-7	-2.1	.4	.9	-96	-277	59	122
South Dakota .....	3.4	2.3	8.1	3.0	3.4	1.5	1.4	.5	510	226	206	78
<b>Southeast</b>												
Alabama .....	5.0	5.2	3.7	5.2	5.0	3.4	.5	1.1	4,243	2,888	451	904
Arkansas .....	4.9	4.8	5.7	4.8	4.9	3.1	.8	1.0	2,331	1,471	385	475
Florida .....	5.7	6.3	4.7	5.3	5.7	3.6	1.1	1.0	19,695	12,245	3,942	3,508
Georgia .....	6.5	7.2	5.7	4.0	6.5	5.0	.9	.6	10,874	8,402	1,455	1,016
Kentucky .....	6.5	6.9	4.5	6.7	6.5	4.5	.7	1.4	4,919	3,375	514	1,029
Louisiana .....	4.7	5.7	3.9	2.1	4.7	3.7	.6	.4	3,978	3,111	486	381
Mississippi .....	4.7	4.9	4.5	4.3	4.7	3.1	.6	1.0	2,214	1,479	263	471
North Carolina .....	6.7	7.2	6.3	5.3	6.7	4.9	.9	.9	10,879	7,905	1,527	1,447
South Carolina .....	5.8	6.3	4.3	5.1	5.8	4.2	.6	1.0	4,243	3,059	462	722
Tennessee .....	5.5	6.1	3.9	4.4	5.5	4.2	.5	.8	6,392	4,835	628	930
Virginia .....	5.8	6.4	4.2	5.0	5.8	4.3	.7	.7	9,646	7,189	1,235	1,222
West Virginia .....	3.1	3.3	2.0	3.4	3.1	2.0	.3	.9	1,031	643	96	291
<b>Southwest</b>												
Arizona .....	7.3	8.3	6.2	4.6	7.3	5.4	1.1	.8	6,810	5,032	1,019	758
New Mexico .....	4.6	5.0	4.3	3.6	4.6	3.2	.7	.7	1,469	1,021	218	231
Oklahoma .....	5.1	5.6	4.1	4.1	5.1	3.6	.6	.8	3,243	2,304	405	534
Texas .....	8.0	9.1	5.9	5.1	8.0	6.4	.9	.8	34,245	27,342	3,636	3,267
<b>Rocky Mountain</b>												
Colorado .....	7.6	8.4	5.8	5.5	7.6	5.8	1.0	.7	7,394	5,676	1,008	711
Idaho .....	5.3	5.3	6.3	4.6	5.3	3.5	1.0	.8	1,251	829	246	177
Montana .....	4.6	5.1	3.6	4.1	4.6	3.0	.7	.8	759	503	116	140
Utah .....	7.4	8.2	5.7	4.7	7.4	5.9	.8	.7	2,864	2,308	297	258
Wyoming .....	5.0	5.6	3.5	4.3	5.0	3.5	.8	.7	512	362	79	72
<b>Far West</b>												
Alaska .....	3.3	2.2	1.7	8.5	3.3	1.5	.2	1.6	488	227	32	229
California .....	6.0	7.1	4.9	2.8	6.0	4.7	.9	.4	47,997	37,492	7,074	3,431
Hawaii .....	2.6	2.5	1.4	4.2	2.6	1.7	.2	.7	781	502	69	210
Nevada .....	7.5	8.0	5.8	7.0	7.5	5.5	1.0	1.0	3,101	2,275	427	400
Oregon .....	6.5	7.6	5.9	2.9	6.5	4.9	1.1	.5	4,747	3,599	792	357
Washington .....	7.5	8.8	6.4	3.3	7.5	5.9	1.1	.5	10,394	8,115	1,554	725
<b>BEA regions</b>												
New England .....	6.0	6.9	4.0	4.7	6.0	4.5	.7	.7	23,075	17,479	2,829	2,767
Mideast .....	4.6	5.4	3.2	3.2	4.6	3.5	.6	.6	57,614	43,491	7,157	6,966
Great Lakes .....	5.0	5.8	3.2	3.8	5.0	3.9	.6	.6	53,277	41,227	5,806	6,244
Plains .....	5.0	5.2	5.0	3.9	5.0	3.5	.9	.6	21,253	14,881	3,777	2,595
Southeast .....	5.7	6.3	4.7	4.8	5.7	4.0	.8	.9	80,444	56,603	11,444	12,397
Southwest .....	7.4	8.5	5.7	4.8	7.4	5.8	.9	.8	45,767	35,699	5,278	4,790
Rocky Mountain .....	6.8	7.6	5.4	5.0	6.8	5.2	.9	.7	12,781	9,677	1,746	1,358
Far West .....	6.2	7.2	5.0	3.1	6.2	4.8	.9	.5	67,508	52,209	9,947	5,351

1. Percent changes are calculated from unrounded data.

2. Net earnings by place of residence is earnings by place of work—the sum of wage and salary disbursements (payrolls), other labor income, and proprietors' income—less personal contributions for social insurance plus an adjustment to convert earnings by place of work to a place-of-residence basis.

Note: Estimates may not add to totals due to rounding.

Source: Bureau of Economic Analysis, U.S. Department of Commerce.

Table 6.—Earnings by Major Industry, by State and Region, 1996-97

	Percent change <sup>1</sup>											
	Earnings by place of work											
	Total	Private goods-producing industries				Private services-producing industries						Government
		Total <sup>2</sup>	Farms	Construction	Manufacturing	Total	Transportation and public utilities	Wholesale trade	Retail trade	Finance, insurance, and real estate	Services	
<b>United States</b> .....	6.4	6.0	-3.5	7.2	6.0	7.4	6.7	7.6	5.6	8.7	7.7	3.6
<b>New England</b>												
Connecticut .....	7.5	7.4	-4	8.9	7.2	8.6	5.5	11.5	4.4	11.2	8.5	1.8
Maine .....	5.4	3.2	-44.4	2.6	5.0	7.2	6.4	5.7	5.5	10.0	7.8	2.6
Massachusetts .....	7.0	6.4	10.7	8.1	5.9	7.8	6.3	7.2	5.1	8.2	8.7	3.6
New Hampshire .....	7.7	8.1	-12.2	6.7	8.6	8.1	5.7	13.4	7.7	12.5	6.5	4.4
Rhode Island .....	5.7	4.2	-3.1	7.4	3.6	6.5	6.3	5.5	6.5	11.2	5.6	5.2
Vermont .....	4.5	3.4	-16.3	3.7	4.7	5.0	4.5	3.2	4.8	4.6	5.6	4.8
<b>Mideast</b>												
Delaware .....	6.5	3.2	-13.3	4.7	3.1	9.8	4.1	5.5	6.2	15.3	9.8	2.6
District of Columbia .....	2.7	5.0	( <sup>3</sup> )	9.6	3.7	2.2	1.7	4.5	-1.5	6.6	1.9	3.0
Maryland .....	6.6	6.7	-24.7	8.6	6.6	7.6	4.4	7.0	5.1	9.7	8.5	3.4
New Jersey .....	5.6	5.0	-22.0	6.8	4.6	6.3	4.5	7.1	4.3	7.3	6.8	3.3
New York .....	5.4	3.8	-37.5	5.2	3.9	6.5	2.8	5.7	5.4	9.0	6.0	2.1
Pennsylvania .....	5.1	4.6	-35.9	6.8	4.9	6.2	5.2	6.5	5.0	5.2	7.0	1.2
<b>Great Lakes</b>												
Illinois .....	6.3	6.5	1.1	6.0	7.0	6.7	6.9	6.4	5.4	9.0	6.4	3.8
Indiana .....	5.4	5.6	17.8	7.4	4.7	6.3	2.9	6.4	4.4	8.2	7.6	1.3
Michigan .....	5.3	4.5	8.7	8.3	3.7	6.0	6.5	8.0	5.2	5.2	5.8	5.3
Ohio .....	5.9	5.3	54.4	6.7	3.9	6.9	5.4	7.8	4.6	9.4	7.3	3.5
Wisconsin .....	5.9	5.5	-54.5	6.6	6.7	6.7	5.6	8.0	5.0	7.7	7.1	3.7
<b>Plains</b>												
Iowa .....	5.4	4.9	-1.7	4.2	7.2	6.4	6.1	7.3	4.2	8.6	6.4	3.4
Kansas .....	6.9	7.4	.6	6.5	8.7	8.0	8.1	7.7	7.2	7.6	8.7	2.2
Minnesota .....	5.6	3.0	-40.0	7.4	6.2	7.5	9.5	4.7	5.7	7.6	8.5	2.8
Missouri .....	6.3	6.8	23.8	6.7	6.0	6.5	6.4	5.7	4.3	7.7	7.3	4.5
Nebraska .....	3.1	-6.5	-35.2	2.3	6.5	8.3	14.8	6.7	4.7	4.8	8.7	3.0
North Dakota .....	-2.4	-22.7	-73.6	1.9	10.2	5.6	2.8	5.4	4.5	6.5	6.8	2.1
South Dakota .....	2.6	-3.1	-25.1	7.5	9.5	6.4	6.0	4.3	5.8	9.4	6.5	1.6
<b>Southeast</b>												
Alabama .....	5.2	4.6	16.1	5.3	3.8	6.4	2.7	6.4	5.9	7.7	7.3	2.9
Arkansas .....	4.8	2.2	-8.0	3.5	4.1	6.8	4.3	6.0	7.4	8.3	7.3	4.5
Florida .....	6.3	4.6	3.3	5.2	4.4	7.1	5.9	5.9	4.8	8.4	8.1	4.9
Georgia .....	7.2	5.6	9.2	5.5	5.1	8.5	7.6	9.0	5.8	10.3	9.2	4.6
Kentucky .....	6.9	8.6	43.1	8.7	6.7	7.1	7.3	7.9	6.3	7.6	6.9	3.3
Louisiana .....	5.8	6.1	-27.1	6.6	5.6	6.2	6.8	7.5	4.7	6.8	6.1	4.2
Mississippi .....	4.9	2.5	-16.2	6.5	2.8	6.9	5.4	6.8	6.2	6.1	7.9	3.8
North Carolina .....	7.2	6.1	5.7	11.1	4.7	8.6	5.1	9.2	7.5	11.1	9.2	5.4
South Carolina .....	6.3	5.0	14.6	6.6	4.2	7.7	4.4	10.0	6.7	8.3	8.4	5.0
Tennessee .....	6.2	5.0	31.8	7.7	3.8	8.0	9.4	7.4	6.3	9.6	8.0	1.4
Virginia .....	6.7	5.8	-22.2	9.0	5.2	8.7	8.8	5.9	5.7	9.9	9.8	2.5
West Virginia .....	2.9	-1	( <sup>3</sup> )	2.7	-2	4.6	.4	6.4	4.4	5.5	5.5	3.2
<b>Southwest</b>												
Arizona .....	8.3	7.8	-4.2	7.5	10.3	9.5	7.6	11.8	7.5	8.7	10.4	4.7
New Mexico .....	5.1	7.1	10.6	2.6	10.3	5.0	5.1	6.7	5.4	4.7	4.6	3.5
Oklahoma .....	5.5	8.3	117.6	.6	5.9	5.4	4.4	5.3	3.3	4.9	6.8	2.0
Texas .....	9.1	9.2	35.2	6.9	8.1	10.2	10.5	11.3	6.8	10.1	11.2	4.6
<b>Rocky Mountain</b>												
Colorado .....	8.5	7.8	5.4	8.7	7.2	9.7	8.3	11.2	7.6	10.9	10.2	4.5
Idaho .....	5.3	3.7	-7.3	4.7	5.3	6.7	6.7	6.6	6.2	1.8	8.1	4.4
Montana .....	5.1	9.1	36.0	6.1	5.0	4.7	3.4	3.8	4.4	4.1	5.5	1.9
Utah .....	8.2	7.9	9.8	9.6	6.9	8.8	7.5	7.1	9.7	9.6	9.0	6.7
Wyoming .....	5.6	9.5	73.7	6.3	3.5	4.7	3.7	9.3	3.6	6.1	4.7	2.0
<b>Far West</b>												
Alaska .....	2.4	-2	26.4	.5	-1.8	5.1	8.1	2.0	3.2	3.9	5.1	.2
California .....	7.0	8.8	-3.6	10.0	9.5	7.1	7.7	7.3	5.9	9.2	6.9	3.8
Hawaii .....	2.6	-2.6	-3.1	-5.7	3.4	2.5	4.7	1.3	.7	.2	3.4	5.1
Nevada .....	8.1	8.4	-3.6	9.9	8.2	8.3	8.7	11.0	9.7	6.1	8.1	6.5
Oregon .....	7.6	8.4	-9.1	8.5	9.5	8.1	6.5	10.4	6.6	11.3	7.7	4.4
Washington .....	8.9	8.5	-28.6	9.6	11.6	10.8	12.9	8.3	6.1	9.1	12.9	3.6
<b>BEA regions</b>												
New England .....	6.9	6.4	-9.4	7.5	6.3	7.8	6.0	8.6	5.3	9.6	8.2	3.3
Mideast .....	5.4	4.5	-32.0	6.5	4.5	6.4	3.9	6.3	5.0	8.4	6.4	2.4
Great Lakes .....	5.8	5.4	9.7	6.9	5.0	6.6	5.8	7.2	5.0	8.2	6.7	3.8
Plains .....	5.4	3.1	-20.5	6.0	6.8	7.1	8.1	5.9	5.2	7.6	7.8	3.2
Southeast .....	6.3	5.2	3.8	7.0	4.5	7.6	6.4	7.4	5.9	9.0	8.3	3.9
Southwest .....	8.5	8.9	34.3	6.3	8.2	9.5	9.4	10.8	6.5	9.3	10.3	4.2
Rocky Mountain .....	7.6	7.3	6.8	8.0	6.6	8.6	7.3	9.1	7.4	9.2	9.2	4.5
Far West .....	7.2	8.4	-8.1	9.1	9.7	7.5	8.3	7.6	5.9	8.9	7.5	3.8

1. Percent changes are calculated from unrounded data.

2. Also includes mining and agricultural services, forestry, and fishing.

3. Not meaningful.

Source: Bureau of Economic Analysis, U.S. Department of Commerce.