

EMBARGOED UNTIL RELEASE AT 8:30 A.M. EDT, WEDNESDAY, MARCH 18, 2015

Technical: Paul Kern: (202) 606-9596
 Ben Hobbs: 606-9594
 Media: Jeannine Aversa: 606-2649
 E-mail inquiries: travelandtourism@bea.gov

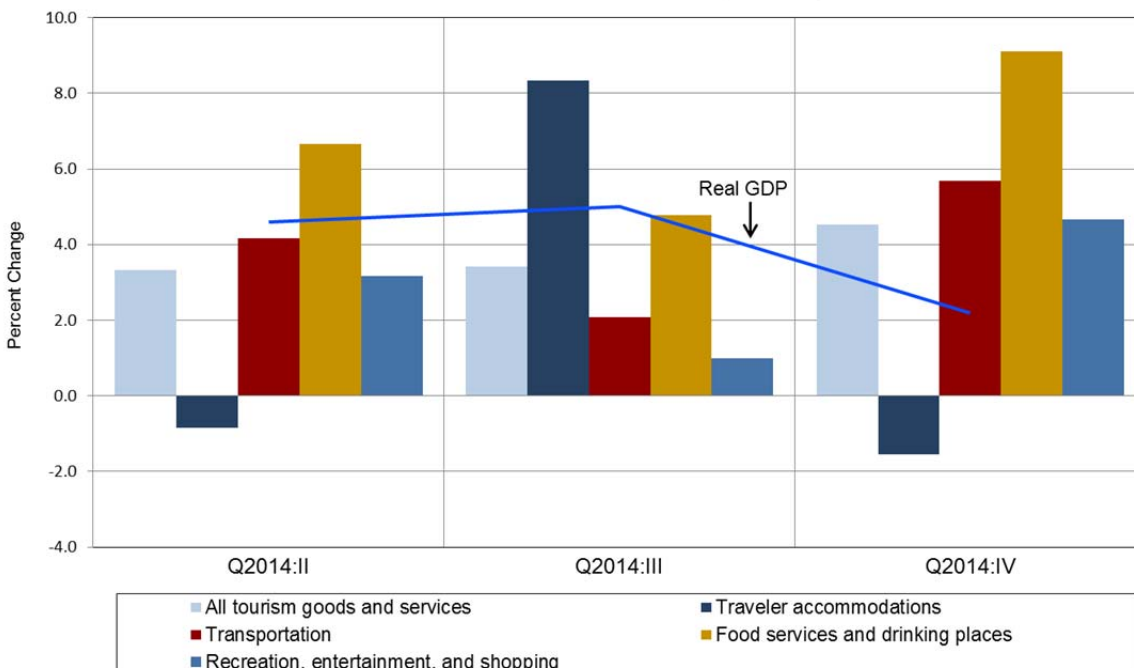
BEA 15-10

TRAVEL AND TOURISM SPENDING ACCELERATED IN THE FOURTH QUARTER OF 2014

Real spending on travel and tourism accelerated in the fourth quarter of 2014, increasing at an annual rate of 4.5 percent after increasing 3.4 percent (revised) in the third quarter. By comparison, real gross domestic product (GDP) decelerated, increasing 2.2 percent (second estimate) in the fourth quarter after increasing 5.0 percent. For the year, real spending on travel and tourism increased 2.5 percent in 2014 after increasing 3.6 percent in 2013. By comparison, real GDP increased 2.4 percent in 2014 after increasing 2.2 percent in 2013.

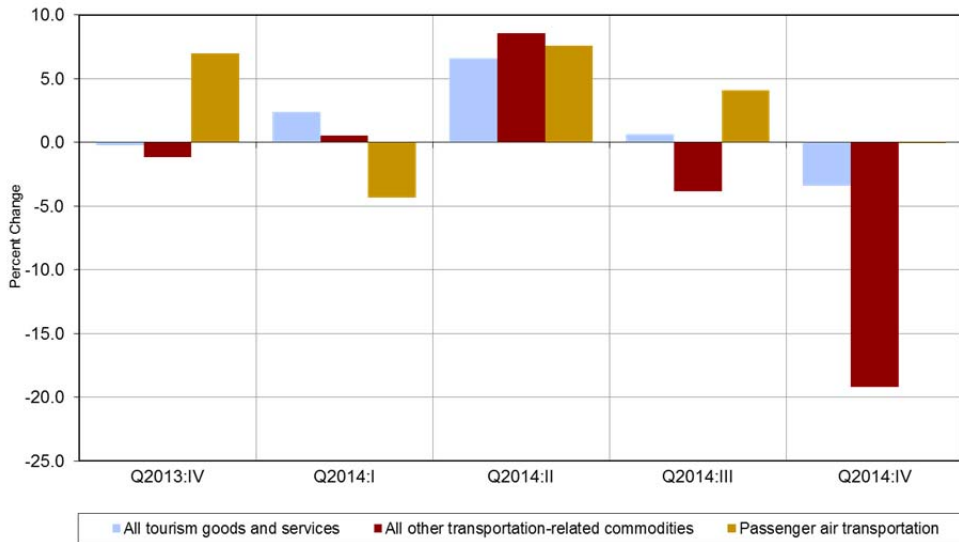
The leading contributors to the acceleration in the fourth quarter were “passenger air transportation” and “recreation and entertainment.” “Passenger air transportation” turned up, increasing 1.7 percent in the fourth quarter after decreasing 4.5 percent in the third quarter. “Recreation and entertainment” also turned up, increasing 6.2 percent after decreasing 0.9 percent. Partially offsetting these upturns, “traveler accommodations” turned down, decreasing 1.5 percent in the fourth quarter after increasing 8.3 percent.

Chart 1. Real Tourism Spending



Tourism Prices. Overall growth in prices for travel and tourism goods and services turned down in the fourth quarter of 2014, decreasing 3.4 percent following an increase of 0.6 percent (revised) in the third quarter. The downturn was mainly attributable to a larger decrease in “all other transportation-related commodities,” which includes gasoline and automotive rentals; this commodity group decreased 19.2 percent in the fourth quarter after decreasing 3.8 percent in the third quarter. For the year 2014, prices for travel and tourism goods and services increased 1.9 percent after increasing 0.5 percent in 2013.

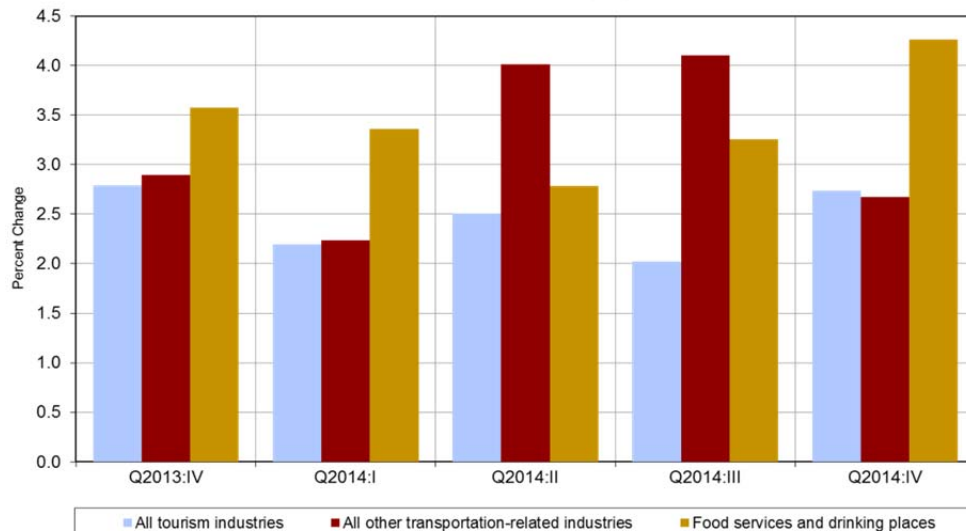
Chart 2. Tourism Prices



U.S. Bureau of Economic Analysis

Tourism Employment. Employment in the travel and tourism industries accelerated, increasing 2.7 percent in the fourth quarter of 2014 after increasing 2.0 percent (revised) in the third quarter. This marks the 19th consecutive quarter of employment growth in the travel and tourism industries. By comparison, overall U.S. employment increased 2.5 percent in the fourth quarter after increasing 2.2 percent in the third quarter. “Food services and drinking places” was the most significant contributor to employment growth, increasing 4.3 percent in the fourth quarter. For the year 2014, employment in the travel and tourism industries increased 2.4 percent after increasing 2.2 percent in 2013.

Chart 3. Tourism Employment



U.S. Bureau of Economic Analysis

Total Tourism-Related Output was \$1.6 trillion in the fourth quarter of 2014. It consisted of \$905.5 billion (58 percent) of direct tourism spending and \$651.5 billion (42 percent) of indirect tourism-related spending.

Total Tourism-Related Employment was 7.8 million jobs in the fourth quarter of 2014 and consisted of 5.5 million (71 percent) direct tourism jobs and 2.3 million (29 percent) indirect tourism-related jobs.

Definitions

Tourism spending. Total tourism-related spending consists of direct tourism output and indirect tourism output. Direct tourism output comprises all domestically produced goods and services purchased by travelers (for example, traveler accommodations and passenger air transportation). Indirect tourism output comprises all output required to support the production of direct tourism output (for example, toiletries for hotel guests and fuel for airplanes).

Tourism employment. Total tourism-related employment consists of direct tourism employment plus indirect tourism employment. Direct tourism employment comprises all jobs where the workers are engaged in the production of direct tourism output (for example, hotel staff and airline pilots). Indirect tourism employment comprises all jobs where the workers are engaged in the production of indirect tourism output (for example, workers producing hotel toiletries and delivering fuel to airlines).

These statistics are from BEA's Travel and Tourism Satellite Accounts (TTsAs), which are supported by funding from the Office of Travel and Tourism Industries, International Trade Administration, U.S. Department of Commerce. The current-price statistics of direct tourism output were derived from BEA's annual TTsAs and from current-price quarterly statistics of personal consumption expenditures from the National Income and Product Accounts (NIPAs). The real statistics of direct tourism output were developed using price indexes from the Bureau of Labor Statistics (BLS) and real quarterly statistics of personal consumption expenditures from the NIPAs. The statistics of direct tourism employment were derived from the annual TTsAs (revised in June 2014) from BEA, the Quarterly Census of Employment and Wages (QCEW), and Current Employment Statistics (CES) from BLS.

Quarterly statistics are seasonally adjusted and expressed at annual rates, unless otherwise specified. Percent changes are calculated from unrounded data and annualized. Real values are in chained (2009) dollars. Price indexes are Fisher chain-type measures. Growth in overall U.S. employment is calculated using BLS total nonfarm employment from Current Employment Statistics, www.bls.gov/ces/home.htm#data.

* * *

Next release – Travel and Tourism statistics for first quarter 2015 will be released on Tuesday, June 23, 2015 at 8:30 A.M. EDT

Table 1.a. Percent Change in Real Tourism Output
[Percent change from preceding period]

Tourism Goods and Services Group							Seasonally adjusted at annual rates															
	2009	2010	2011	2012	2013	2014	Q2011:II	Q2011:III	Q2011:IV	Q2012:I	Q2012:II	Q2012:III	Q2012:IV	Q2013:I	Q2013:II	Q2013:III	Q2013:IV	Q2014:I	Q2014:II	Q2014:III	Q2014:IV	
All tourism goods and services	-9.5	0.8	5.3	2.3	3.6	2.5	7.6	1.0	4.1	2.6	1.9	-0.9	1.7	8.1	3.3	3.0	4.5	-1.1	3.3	3.4	4.5	
Traveler accommodations	-5.7	1.7	4.0	3.1	4.7	3.9	6.2	-0.5	5.0	0.8	3.5	3.7	8.7	4.6	-0.2	3.3	14.5	0.6	-0.9	8.3	-1.5	
Transportation	-7.1	1.7	6.5	2.5	4.9	2.1	9.3	0.7	4.9	3.7	3.0	-4.0	-0.2	14.6	7.0	3.4	0.6	-0.8	4.2	2.1	5.7	
Passenger air transportation	-6.2	2.3	4.0	-2.9	7.8	2.1	9.0	-7.2	-6.4	1.2	-3.4	-6.6	-1.0	26.3	13.4	4.5	-0.2	-2.8	11.1	-4.5	1.7	
All other transportation-related commodities	-7.8	1.2	8.3	6.2	3.1	2.2	9.5	6.4	13.2	5.3	7.5	-2.3	0.4	7.7	2.9	2.6	1.1	0.6	-0.3	6.8	8.5	
Food services and drinking places	-12.7	4.0	5.1	4.8	2.9	3.3	4.8	4.5	5.3	6.6	3.5	1.7	7.2	2.3	0.8	0.0	7.4	-1.8	6.6	4.8	9.1	
Recreation, entertainment, and shopping	-13.5	-3.1	4.3	0.0	0.8	1.3	7.3	0.7	1.4	-0.4	-2.3	-0.3	-3.3	3.0	1.0	4.1	2.5	-2.7	3.2	1.0	4.7	
Recreation and entertainment	-9.0	-2.2	1.7	0.8	0.2	0.4	7.7	-0.1	3.3	2.2	-1.7	-0.2	-6.7	3.4	0.2	5.7	0.9	-5.8	4.1	-0.9	6.2	
Shopping	-17.1	-4.0	6.8	-0.7	1.3	2.1	7.0	1.3	-0.3	-2.7	-2.7	-0.4	-0.2	2.6	1.7	2.7	3.8	0.0	2.4	2.6	3.3	

Source: U.S. Bureau of Economic Analysis

Table 1.b. Real Tourism Output
[Millions of chained (2009) dollars]

Tourism Goods and Services Group							Seasonally adjusted at annual rates															
	2009	2010	2011	2012	2013	2014	Q2011:II	Q2011:III	Q2011:IV	Q2012:I	Q2012:II	Q2012:III	Q2012:IV	Q2013:I	Q2013:II	Q2013:III	Q2013:IV	Q2014:I	Q2014:II	Q2014:III	Q2014:IV	
All tourism goods and services	678,670	683,845	720,095	736,977	763,439	782,201	720,631	722,421	729,763	734,417	737,912	736,199	739,381	753,901	760,031	765,698	774,128	771,971	778,323	784,883	793,626	
Traveler accommodations	132,527	134,795	140,210	144,527	151,286	157,166	140,395	140,212	141,926	142,194	143,417	144,724	147,772	149,440	149,374	150,579	155,752	155,999	155,664	158,810	158,192	
Transportation	267,008	271,478	289,205	296,437	310,938	317,612	289,671	290,168	293,672	296,326	298,534	295,507	295,382	305,627	310,812	313,424	313,888	313,280	316,489	318,123	322,557	
Passenger air transportation	110,818	113,403	117,969	114,601	123,507	126,105	120,204	117,980	116,048	116,402	115,407	113,441	113,153	119,952	123,793	125,174	125,107	124,221	127,523	126,065	126,611	
All other transportation-related commodities	156,265	158,114	171,211	181,841	187,427	191,534	169,474	172,137	177,559	179,872	183,137	182,097	182,260	185,693	187,009	188,235	188,771	189,065	188,938	192,084	196,050	
Food services and drinking places	100,615	104,651	109,968	115,237	118,599	122,561	109,332	110,533	111,961	113,758	114,745	115,218	117,226	117,894	118,124	118,128	120,249	119,714	121,656	123,082	125,793	
Recreation, entertainment, and shopping	178,503	172,935	180,388	180,383	181,772	184,180	180,878	181,171	181,793	181,599	180,569	180,435	178,930	180,240	180,696	182,521	183,629	182,355	183,783	184,236	186,345	
Recreation and entertainment	84,770	82,939	84,315	85,027	85,194	85,550	84,537	84,525	85,217	85,692	85,320	85,283	83,813	84,518	84,568	85,746	85,946	84,674	85,534	85,345	86,647	
Shopping	93,733	89,997	96,076	95,373	96,589	98,636	96,343	96,647	96,583	95,925	95,268	95,173	95,128	95,734	96,138	96,789	97,694	97,687	98,257	98,894	99,706	

Source: U.S. Bureau of Economic Analysis

Table 1.c. Percent Changes in Chain-Type Price Indexes for Direct Tourism Output
[Percent change from preceding period]

Tourism Goods and Services Group							Seasonally adjusted at annual rates															
	2009	2010	2011	2012	2013	2014	Q2011:II	Q2011:III	Q2011:IV	Q2012:I	Q2012:II	Q2012:III	Q2012:IV	Q2013:I	Q2013:II	Q2013:III	Q2013:IV	Q2014:I	Q2014:II	Q2014:III	Q2014:IV	
All tourism goods and services	-3.2	3.3	5.0	2.8	0.5	1.9	7.4	5.0	-0.9	5.5	1.3	1.1	2.6	-0.2	-3.4	4.4	-0.2	2.4	6.6	0.6	-3.4	
Traveler accommodations	-2.8	-0.8	1.7	3.0	1.2	4.2	5.2	8.2	-4.4	8.5	6.5	-5.4	0.0	5.5	5.5	-3.0	-8.0	13.3	11.1	1.0	7.8	
Transportation	-8.8	7.6	9.0	2.9	-0.5	1.1	11.6	5.5	-2.1	6.3	-1.5	3.0	4.7	-3.5	-10.5	9.9	2.1	-1.4	8.2	-0.7	-11.8	
Passenger air transportation	-9.1	8.6	7.3	4.7	-0.6	2.4	7.1	6.4	7.4	7.8	3.8	-5.5	2.6	-1.2	-8.5	7.6	7.0	-4.3	7.6	4.1	0.0	
All other transportation-related commodities	-8.6	6.9	10.2	1.7	-0.5	0.2	14.8	4.9	-7.9	5.3	-4.9	8.9	6.0	-5.0	-11.7	11.5	-1.1	0.6	8.6	-3.8	-19.2	
Food services and drinking places	3.8	1.2	2.4	3.1	2.1	2.4	4.0	3.0	2.7	3.4	3.4	2.9	1.5	1.6	2.8	2.0	1.9	1.9	2.9	3.0	3.6	
Recreation, entertainment, and shopping	1.3	1.1	2.4	2.3	0.9	1.3	3.6	2.8	1.7	3.1	1.4	1.9	1.4	0.4	-0.5	2.0	0.7	1.7	2.3	1.3	-0.3	
Recreation and entertainment	0.6	1.2	1.7	2.2	1.1	1.2	2.4	1.3	0.7	3.8	2.0	2.5	1.4	0.6	-0.6	2.4	1.2	1.9	1.7	0.4	-1.2	
Shopping	1.9	1.1	3.0	2.3	0.7	1.4	4.8	4.1	2.7	2.5	0.9	1.4	1.4	0.3	-0.4	1.7	0.3	1.4	2.8	2.2	0.5	

Source: U.S. Bureau of Economic Analysis

Table 1.d. Chain-Type Price Indexes for Direct Tourism Output
[Index numbers, 2009=100]

Tourism Goods and Services Group	Seasonally adjusted at annual rates																				
	2009	2010	2011	2012	2013	2014	Q2011:II	Q2011:III	Q2011:IV	Q2012:I	Q2012:II	Q2012:III	Q2012:IV	Q2013:I	Q2013:II	Q2013:III	Q2013:IV	Q2014:I	Q2014:II	Q2014:III	Q2014:IV
All tourism goods and services	100.0	103.3	108.5	111.5	112.1	114.3	108.4	109.7	109.5	110.9	111.3	111.6	112.3	112.3	111.3	112.5	112.4	113.1	114.9	115.1	114.1
Traveler accommodations	100.0	99.2	100.9	103.9	105.1	109.5	100.5	102.5	101.3	103.4	105.0	103.6	103.6	105.0	106.4	105.6	103.4	106.7	109.5	109.8	111.9
Transportation	100.0	107.6	117.3	120.7	120.0	121.4	117.4	119.0	118.4	120.2	119.8	120.7	122.0	121.0	117.7	120.5	121.1	120.6	123.0	122.8	119.0
Passenger air transportation	100.0	108.6	116.6	122.0	121.3	124.2	115.6	117.4	119.6	121.8	123.0	121.3	122.1	121.7	119.0	121.2	123.3	121.9	124.2	125.4	125.4
All other transportation-related commodities	100.0	106.9	117.8	119.8	119.2	119.5	118.7	120.1	117.7	119.2	117.7	120.2	122.0	120.4	116.7	120.0	119.6	119.8	122.3	121.1	114.8
Food services and drinking places	100.0	101.2	103.6	106.8	109.1	111.7	103.3	104.1	104.8	105.7	106.6	107.3	107.7	108.1	108.9	109.4	109.9	110.5	111.3	112.1	113.1
Recreation, entertainment, and shopping	100.0	101.1	103.6	105.9	106.9	108.3	103.3	104.1	104.5	105.3	105.7	106.2	106.5	106.7	106.5	107.1	107.3	107.7	108.3	108.7	108.6
Recreation and entertainment	100.0	101.2	102.9	105.1	106.3	107.6	102.9	103.2	103.4	104.3	104.9	105.5	105.9	106.0	105.9	106.5	106.8	107.3	107.7	107.8	107.5
Shopping	100.0	101.1	104.2	106.6	107.4	108.9	103.8	104.8	105.5	106.2	106.4	106.8	107.1	107.2	107.1	107.6	107.7	108.1	108.8	109.4	109.5

Source: U.S. Bureau of Economic Analysis

Table 2. Direct Tourism Output
[Millions of dollars]

Tourism Goods and Services Group	Seasonally adjusted at annual rates																				
	2009	2010	2011	2012	2013	2014	Q2011:II	Q2011:III	Q2011:IV	Q2012:I	Q2012:II	Q2012:III	Q2012:IV	Q2013:I	Q2013:II	Q2013:III	Q2013:IV	Q2014:I	Q2014:II	Q2014:III	Q2014:IV
All tourism goods and services	678,641	706,708	781,477	822,046	855,899	894,021	781,081	792,582	798,803	814,724	821,284	821,687	830,490	846,293	845,759	861,257	870,286	873,004	894,302	903,285	905,494
<i>Percent change at annual rate</i>	-12.4	4.1	10.6	5.2	4.1	4.5	15.5	6.0	3.2	8.2	3.3	0.2	4.4	7.8	-0.3	7.5	4.3	1.3	10.1	4.1	1.0
Traveler accommodations	132,502	133,655	141,416	150,172	158,997	172,099	141,027	143,662	143,783	147,029	150,648	149,926	153,086	156,903	158,961	159,029	161,093	166,456	170,519	174,404	177,016
Transportation	267,053	292,260	339,210	357,701	373,225	385,459	340,146	345,325	347,689	356,244	357,527	356,536	360,496	369,657	365,673	377,542	380,027	377,917	389,368	390,690	383,860
Passenger air transportation	110,807	123,185	137,507	139,871	149,825	156,670	138,993	138,564	138,753	141,829	141,949	137,582	138,124	145,994	147,348	151,733	154,225	151,449	158,346	158,103	158,784
All other transportation-related commodities	156,246	169,075	201,703	217,830	223,400	228,788	201,152	206,761	208,936	214,415	215,578	218,954	222,373	223,664	218,325	225,810	225,803	226,468	231,022	232,587	225,076
Food services and drinking places	100,605	105,903	113,976	123,096	129,392	136,948	112,972	115,057	117,326	120,197	122,272	123,644	126,270	127,486	128,623	129,259	132,198	132,224	135,347	137,965	142,255
Recreation, entertainment, and shopping	178,481	174,890	186,875	191,077	194,286	199,516	186,936	188,537	190,005	191,254	190,837	191,581	190,638	192,246	192,501	195,427	196,968	196,407	199,069	200,225	202,363
Recreation and entertainment	84,764	83,909	86,783	89,391	90,550	92,050	86,958	87,226	88,091	89,411	89,463	89,968	88,723	89,595	89,517	91,304	91,784	90,853	92,160	92,037	93,151
Shopping	93,717	90,981	100,092	101,686	103,736	107,466	99,978	101,312	101,914	101,844	101,373	101,612	101,915	102,651	102,985	104,122	105,184	105,554	106,908	108,188	109,212

Source: U.S. Bureau of Economic Analysis

Table 3. Total Tourism-Related Output
[Millions of dollars]

Tourism Goods and Services Group	Seasonally adjusted at annual rates																				
	2009	2010	2011	2012	2013	2014	Q2011:II	Q2011:III	Q2011:IV	Q2012:I	Q2012:II	Q2012:III	Q2012:IV	Q2013:I	Q2013:II	Q2013:III	Q2013:IV	Q2014:I	Q2014:II	Q2014:III	Q2014:IV
All tourism goods and services	1,173,256	1,218,917	1,343,838	1,411,158	1,469,714	1,535,462	1,343,173	1,362,173	1,372,912	1,399,188	1,410,027	1,410,251	1,425,164	1,452,426	1,452,798	1,478,651	1,494,980	1,499,015	1,535,159	1,550,727	1,556,948
<i>Percent change at annual rate</i>	-12.4	3.9	10.2	5.0	4.1	4.5	15.0	5.8	3.2	7.9	3.1	0.1	4.3	7.9	0.1	7.3	4.5	1.1	10.0	4.1	1.6
Traveler accommodations	209,459	211,282	223,551	237,393	251,342	272,054	222,936	227,101	227,293	232,423	238,145	237,004	241,999	248,033	251,286	251,393	254,656	263,134	269,557	275,699	279,827
Transportation	441,741	482,970	557,287	586,343	613,322	634,337	558,998	566,815	570,521	584,243	586,462	584,015	590,654	606,697	601,168	620,360	625,063	621,408	640,419	642,647	632,875
Passenger air transportation	193,083	214,651	239,607	243,727	261,071	273,000	242,198	241,450	241,778	247,138	247,348	239,738	240,682	254,395	256,756	264,396	268,738	263,901	275,919	275,497	276,683
All other transportation-related commodities	248,658	268,319	317,679	342,617	352,251	361,337	316,800	325,365	328,743	337,105	339,114	344,276	349,972	352,302	344,413	355,964	356,325	357,506	364,500	367,150	356,192
Food services and drinking places	183,928	193,614	208,373	225,046	236,556	250,370	206,538	210,349	214,497	219,747	223,540	226,047	230,848	233,073	235,152	236,314	241,686	241,734	247,443	252,230	260,074
Recreation, entertainment, and shopping	338,129	331,050	354,628	362,376	368,494	378,701	354,702	357,908	360,602	362,775	361,880	363,186	361,663	364,623	365,192	370,583	373,576	372,738	377,741	380,152	384,173
Recreation and entertainment	146,135	144,661	149,575	154,057	155,975	158,541	149,881	150,355	151,815	154,133	154,201	155,017	152,875	154,327	154,213	157,273	158,090	156,494	158,722	158,512	160,435
Shopping	191,994	186,389	205,053	208,319	212,518	220,160	204,821	207,553	208,787	208,642	207,679	208,169	208,788	210,297	210,980	213,311	215,486	216,244	219,018	221,640	223,738

Source: U.S. Bureau of Economic Analysis

Table 4. Percent Change in Direct Tourism Employment
[Percent change from preceding period]

Tourism Industry Group							Seasonally adjusted at annual rates														
	2009	2010	2011	2012	2013	2014	Q2011:II	Q2011:III	Q2011:IV	Q2012:I	Q2012:II	Q2012:III	Q2012:IV	Q2013:I	Q2013:II	Q2013:III	Q2013:IV	Q2014:I	Q2014:II	Q2014:III	Q2014:IV
All tourism industries	-8.6	-2.0	3.2	2.9	2.2	2.4	3.9	3.7	2.3	3.6	2.4	2.0	2.1	2.1	2.3	1.9	2.8	2.2	2.5	2.0	2.7
Traveler accommodations	-7.1	0.7	2.4	2.7	2.3	1.7	1.9	3.5	1.1	3.2	4.0	2.2	1.3	3.6	1.8	1.1	2.6	2.2	2.1	0.1	0.4
Transportation	-7.3	-3.5	2.8	1.9	0.7	2.0	4.2	3.2	2.2	1.8	1.3	1.2	0.6	-0.5	1.7	0.6	2.3	0.9	3.4	3.0	2.7
Air transportation services	-3.9	-2.3	3.3	1.3	-0.7	0.7	4.1	3.6	1.8	0.3	0.5	0.6	-0.1	-3.3	0.8	-1.5	1.4	-0.9	2.5	1.4	2.8
All other transportation-related industries	-9.6	-4.3	2.5	2.4	1.8	2.9	4.2	2.9	2.5	2.9	1.9	1.7	1.0	1.6	2.3	2.2	2.9	2.2	4.0	4.1	2.7
Food services and drinking places	-10.5	1.3	4.6	4.9	3.9	3.4	4.7	4.1	4.5	7.2	3.6	4.0	3.9	4.3	3.5	3.5	3.6	3.4	2.8	3.3	4.3
Recreation, entertainment, and shopping	-9.0	-7.4	2.2	0.1	0.4	1.9	3.9	2.9	-0.5	-0.5	-1.0	-1.3	1.4	-0.9	1.5	1.7	2.3	1.6	1.7	1.5	3.4
Recreation and entertainment	-10.5	-3.4	2.0	1.7	0.6	2.0	1.9	3.6	0.3	2.8	1.5	-0.2	2.3	-1.7	1.2	1.4	2.7	1.8	1.7	1.7	4.7
Shopping	-7.3	-11.7	2.5	-1.8	0.2	1.6	6.3	2.2	-1.5	-4.2	-4.1	-2.6	0.2	0.1	2.0	2.0	1.8	1.4	1.6	1.2	1.9
All other industries	-7.0	-9.3	4.9	5.9	2.2	1.9	9.2	7.6	6.0	7.2	5.2	3.3	2.2	1.7	1.3	2.0	2.0	1.4	2.3	2.0	2.1

Source: U.S. Bureau of Economic Analysis

Table 5. Direct Tourism Employment
[Thousands]

Tourism Industry Group							Seasonally adjusted at annual rates														
	2009	2010	2011	2012	2013	2014	Q2011:II	Q2011:III	Q2011:IV	Q2012:I	Q2012:II	Q2012:III	Q2012:IV	Q2013:I	Q2013:II	Q2013:III	Q2013:IV	Q2014:I	Q2014:II	Q2014:III	Q2014:IV
All tourism industries	5,045.7	4,946.0	5,106.6	5,252.5	5,365.6	5,491.8	5,088.5	5,134.4	5,163.2	5,209.5	5,240.8	5,266.4	5,293.3	5,320.9	5,350.9	5,376.8	5,413.9	5,443.4	5,477.2	5,504.6	5,541.9
Traveler accommodations	1,269.3	1,277.7	1,308.9	1,343.7	1,374.6	1,398.2	1,303.9	1,315.2	1,318.6	1,329.1	1,342.1	1,349.5	1,354.0	1,365.9	1,372.0	1,375.9	1,384.8	1,392.3	1,399.6	1,399.8	1,401.2
Transportation	1,031.0	995.4	1,023.3	1,043.3	1,051.1	1,072.2	1,020.5	1,028.5	1,034.2	1,038.8	1,042.2	1,045.3	1,046.8	1,045.5	1,049.9	1,051.5	1,057.4	1,059.8	1,068.6	1,076.5	1,083.8
Air transportation services	434.4	424.2	438.1	443.7	440.6	443.8	436.7	440.6	442.6	443.0	443.5	444.2	444.1	440.4	441.3	439.6	441.2	440.2	442.9	444.5	447.5
All other transportation-related industries	596.7	571.2	585.3	599.6	610.4	628.4	583.8	587.9	591.6	595.8	598.7	601.2	602.7	605.1	608.5	611.8	616.2	619.6	625.7	632.1	636.2
Food services and drinking places	1,533.5	1,553.9	1,625.8	1,704.7	1,770.5	1,830.1	1,617.7	1,634.0	1,652.1	1,681.1	1,696.0	1,712.5	1,729.2	1,747.4	1,762.7	1,778.1	1,793.8	1,808.7	1,821.1	1,835.8	1,855.0
Recreation, entertainment, and shopping	1,013.8	939.3	960.1	961.1	965.3	983.3	959.2	966.2	964.9	963.7	961.2	958.1	961.3	959.2	962.8	966.9	972.4	976.3	980.4	984.0	992.4
Recreation and entertainment	528.7	510.9	521.3	530.2	533.6	544.4	519.5	524.1	524.4	528.1	530.1	529.8	532.8	530.6	532.2	534.0	537.6	540.0	542.3	544.6	550.9
Shopping	485.1	428.3	438.8	430.9	431.7	438.8	439.7	442.1	440.4	435.7	431.2	428.3	428.5	428.6	430.7	432.8	434.8	436.3	438.1	439.4	441.5
All other industries	198.1	179.7	188.5	199.8	204.1	208.0	187.1	190.6	193.4	196.8	199.3	200.9	202.0	202.9	203.5	204.5	205.6	206.3	207.5	208.5	209.6

Source: U.S. Bureau of Economic Analysis

Table 6. Total Tourism-Related Employment
[Thousands]

Tourism Industry Group							Seasonally adjusted at annual rates														
	2009	2010	2011	2012	2013	2014	Q2011:II	Q2011:III	Q2011:IV	Q2012:I	Q2012:II	Q2012:III	Q2012:IV	Q2013:I	Q2013:II	Q2013:III	Q2013:IV	Q2014:I	Q2014:II	Q2014:III	Q2014:IV
All tourism industries	7,210.5	7,043.6	7,255.6	7,451.7	7,596.5	7,765.3	7,230.1	7,294.5	7,332.0	7,393.8	7,437.2	7,470.5	7,505.2	7,537.1	7,577.7	7,610.5	7,660.6	7,698.5	7,745.7	7,782.6	7,834.2
<i>Percent change at annual rate</i>	-8.2	-2.3	3.0	2.7	1.9	2.2	3.7	3.6	2.1	3.4	2.4	1.8	1.9	1.7	2.2	1.7	2.7	2.0	2.5	1.9	2.7
Traveler accommodations	1,806.5	1,818.4	1,862.6	1,912.0	1,956.0	1,989.6	1,855.6	1,871.5	1,876.4	1,891.3	1,909.8	1,920.3	1,926.6	1,943.6	1,952.3	1,957.8	1,970.4	1,981.2	1,991.5	1,991.8	1,993.7
Transportation	1,661.5	1,605.8	1,650.0	1,682.0	1,692.6	1,724.5	1,645.1	1,658.6	1,667.5	1,674.6	1,680.4	1,685.4	1,687.6	1,684.5	1,691.1	1,692.7	1,701.9	1,705.0	1,719.3	1,731.0	1,742.7
Air transportation services	830.0	810.6	837.1	847.9	842.0	848.0	834.6	842.0	845.8	846.5	847.6	848.8	848.6	841.6	843.3	840.1	843.1	841.1	846.3	849.3	855.2
All other transportation-related industries	831.5	795.2	812.9	834.2	850.5	876.5	810.6	816.6	821.7	828.1	832.8	836.7	839.0	842.9	847.8	852.6	858.9	863.9	873.0	881.7	887.5
Food services and drinking places	1,826.8	1,851.1	1,936.7	2,030.8	2,109.1	2,180.2	1,927.1	1,946.5	1,968.2	2,002.7	2,020.3	2,040.1	2,059.9	2,081.7	2,099.9	2,118.2	2,136.9	2,154.6	2,169.4	2,186.9	2,209.8
Recreation, entertainment, and shopping	1,588.1	1,470.4	1,493.6	1,496.1	1,500.8	1,526.7	1,492.0	1,501.8	1,499.4	1,499.3	1,496.6	1,492.0	1,496.6	1,491.4	1,497.5	1,503.2	1,511.1	1,516.2	1,522.0	1,527.6	1,540.9
Recreation and entertainment	841.6	815.0	825.2	838.7	842.4	858.6	822.5	828.6	828.7	835.4	838.7	838.0	842.8	837.4	840.3	843.3	848.5	851.5	854.9	858.9	869.1
Shopping	746.6	655.4	668.4	657.4	658.4	668.1	669.4	673.2	670.7	663.9	657.8	654.0	653.8	654.0	657.2	659.9	662.6	664.7	667.1	668.8	671.8
All other industries	327.7	298.0	312.7	330.8	338.0	344.3	310.4	316.0	320.5	326.0	330.0	332.7	334.5	335.9	337.0	338.7	340.4	341.5	343.5	345.2	347.0

Source: U.S. Bureau of Economic Analysis